



West End, Wilburton, Ely, CB6

Offers In Excess Of £330,000



DOING REAL ESTATE A WORLD OF GOOD



Three bedroom semi-detached property located in the sought after village of Wilburton



Key Features

- ample parking
- semi-detached home
- two reception rooms
- deceptively spacious
- immaculate condition
- three generous bedrooms







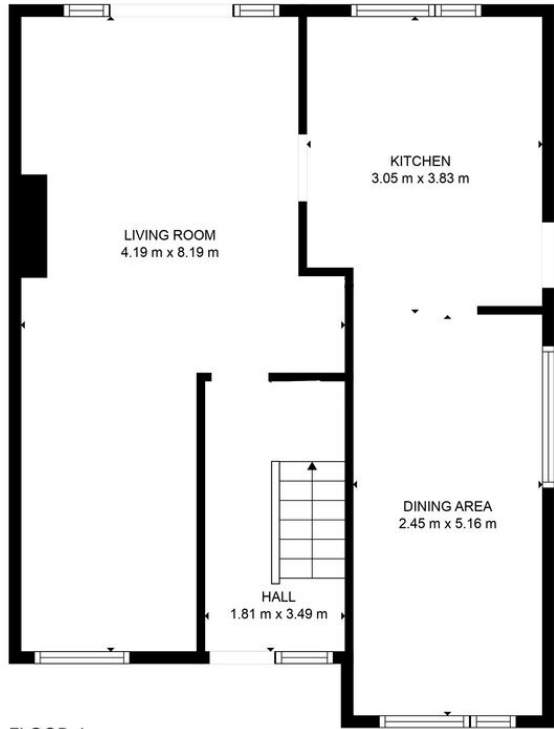


This wonderful three bedroom semi-detached home is situated in Wilburton, set back from the road and offers plenty of versatile space for entertaining. As you enter the property you walk into the entrance hall which is flooded with light, as you continue through the hallway you will find the generous lounge which can easily be divided into two sections. You will then find the large open plan Kitchen/Diner is a fantastic open plan space, ideal for entertaining. On the first floor there are three generous bedrooms and a family bathroom with a separate WC. All bedrooms are exceptionally spacious and light. They're a complete blank canvas and ready to move straight into, with plenty of room for furniture. To the rear there is an enclosed garden which is majoritively laid to lawn with a generous patio area, to the front there is a drive for multiple vehicles. Wilburton is a small village situated in Cambridgeshire, England. It is six miles south west of Ely and around fourteen miles north of Cambridge, ideal for families and commuters alike.

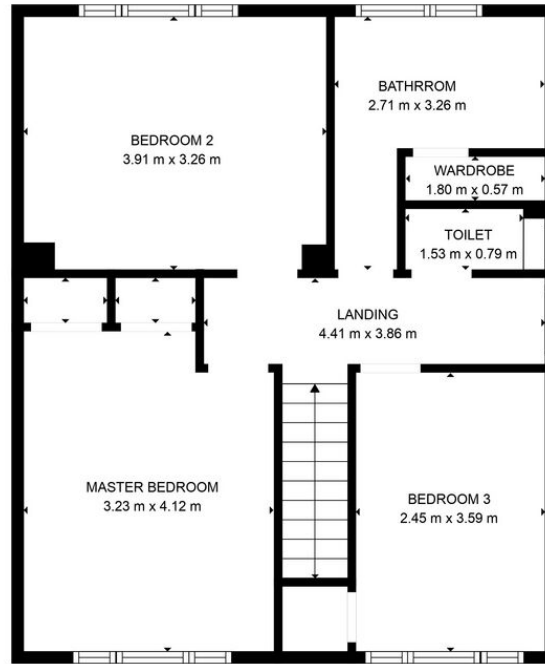








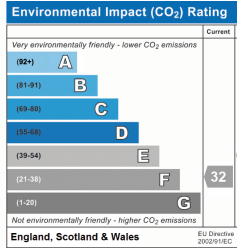
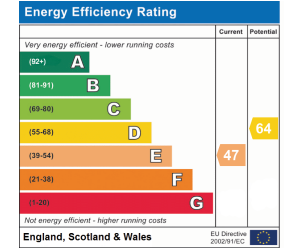
FLOOR 1



FLOOR 2

TOTAL: 112 m2
 FLOOR 1: 57 m2, FLOOR 2: 55 m2

MEASUREMENTS ARE CALCULATED BY CUBICASA TECHNOLOGY. DEEMED HIGHLY RELIABLE BUT NOT GUARANTEED.



Tenure Type:
Council Tax Band:
Council Authority:

