



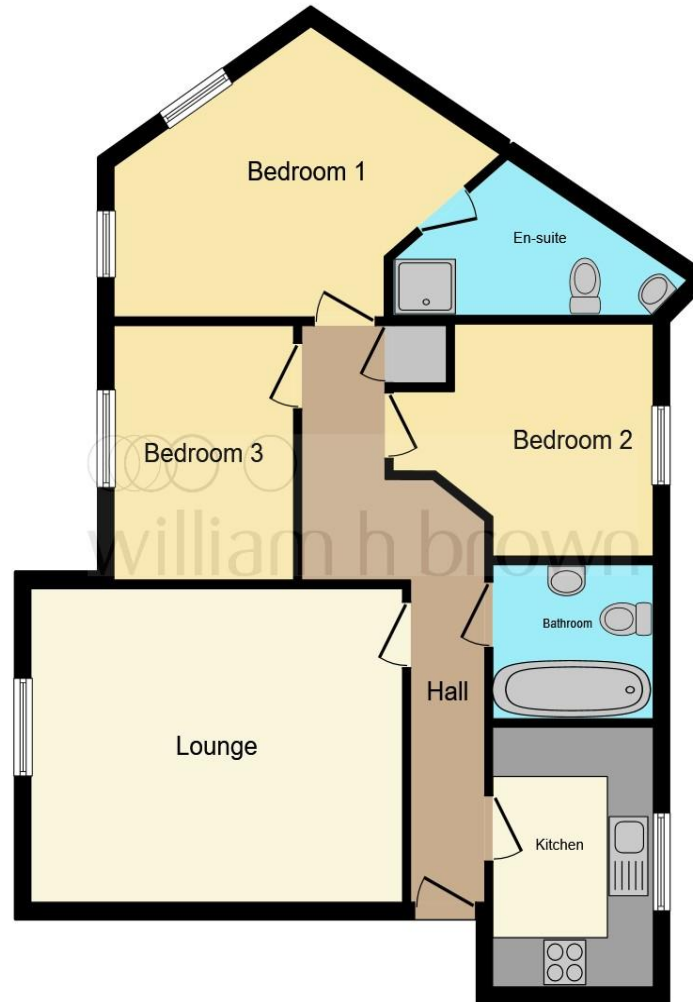
Goodwin Close, Great Baddow Chelmsford CM2 9GX

welcome to

Goodwin Close, Great Baddow Chelmsford

Top floor 3-bed apartment boasting a stunning master suite with dual-aspect windows and en-suite. Bright, spacious living with modern finish throughout. Includes two further bedrooms, stylish bathroom, and allocated parking. Ideal for professionals or families seeking comfort and convenience.





Top Floor Apartment

Entrance Hall

Lounge

14' 10" x 12' 8" (4.52m x 3.86m)

Kitchen

10' 4" x 6' 1" (3.15m x 1.85m)

Bedroom One

15' 9" x 11' 6" MAX (4.80m x 3.51m MAX)

En-Suite

Bedroom Two

10' 8" x 10' 3" (3.25m x 3.12m)

Bedroom Three

10' 8" x 6' 6" (3.25m x 1.98m)

Bathroom

Exterior

Allocated Parking

Agents Note:

This floor plan is for illustrative purposes only. It is not drawn to scale. Any measurements, floor areas (including any total floor area), openings and orientation are approximate. No details are guaranteed, they cannot be relied upon for any purpose and they do not form part of any agreement. No liability is taken for any error, omission or misstatement. A party must rely upon its own inspection(s). Powered by www.focalagent.com

welcome to

Goodwin Close, Great Baddow Chelmsford

- Top floor apartment
- En-suite to Master Bedroom
- Three Bedrooms
- Offered with NO ONWARD CHAIN
- One allocated parking space

Tenure: Leasehold EPC Rating: C

Council Tax Band: D Service Charge: 2452.81

Ground Rent: 210.00

This is a Leasehold property with details as follows; Term of Lease 155 years from 01 Jan 2003.
Should you require further information please contact the branch. Please Note additional fees could be incurred for items such as Leasehold packs.

guide price

£300,000



Please note the marker reflects the postcode not the actual property

view this property online williamhbrown.co.uk/Property/CMS100738



Property Ref:
CMS100738 - 0005

1. MONEY LAUNDERING REGULATIONS Intending purchasers will be asked to produce identification documentation at a later stage and we would ask for your co-operation in order that there is no delay in agreeing the sale. 2. These particulars do not constitute part or all of an offer or contract. 3. The measurements indicated are supplied for guidance only and as such must be considered incorrect. Potential buyers are advised to recheck measurements before committing to any expense. 4. We have not tested any apparatus, equipment, fixtures or services and it is in the buyers interest to check the working condition of any appliances. 5. Where an EPC, or a Home Report (Scotland only) is held for this property, it is available for inspection at the branch by appointment. If you require a printed version of a Home Report, you will need to pay a reasonable production charge reflecting printing and other costs. 6. We are not able to offer an opinion either written or verbal on the content of these reports and this must be obtained from your legal representative. 7. Whilst we take care in preparing these reports, a buyer should ensure that his/her legal representative confirms as soon as possible all matters relating to title including the extent and boundaries of the property and other important matters before exchange of contracts.

William H Brown is a trading name of Sequence (UK) Limited which is registered in England and Wales under company number 4268443, Registered Office is Cumbria House, 16-20 Hockliffe Street, Leighton Buzzard, Bedfordshire, LU7 1GN. VAT Registration Number is 500 2481 05.



william h brown



01245 200499



ChelmsfordSouth@WilliamHBrown.co.uk



2 Hylands Parade Wood Street, Chelmsford,
Essex, CM2 8BW



williamhbrown.co.uk