



Fleetwood Rise

Atworth, Melksham SN12 8JH

- End of Chain
- Solar Panels and Batteries
- Three Bedrooms
- Utility Room
- Backs onto Green Space
- Popular Village Location
- Two Reception Rooms
- Good Bus Links to Bath

£275,000 Freehold



Location

Porch

External door, three windows to front elevation and doors to hallway and utility.

Hall

Window to front elevation stairs to first floor with storage under, radiator and doors to living room, utility and kitchen.

Kitchen

10'6" x 12'0"

Fitted with a matching range of base and eye level units with worktop space over, sink, integrated fridge, washing machine, fitted oven and four ring ceramic hob, window to rear elevation, door to dining room, two storage cupboards and radiator.

Living Room

13'0" x 10'11"

Window to front elevation, radiator and sliding door to dining room.

Dining Room

7'10" x 11'11"

Window to rear elevation and radiator.



Utility

8'9" x 6'9"

Space for fridge/freezer and tumble dryer.

Landing

Window to rear elevations and doors to bedrooms, shower room and WC.

Bedroom One

12'1" x 11'1"

Window to front elevation, over stairs storage cupboard, radiator and fitted wardrobe.

Bedroom Two

13'4" x 9'11"

Window to front elevation and fitted wardrobes.

Bedroom Three

8'11" x 7'9"

Window to rear elevation and fitted wardrobe with boiler.

Shower Room

Fitted with two piece suite comprising shower enclosure and WC with window to rear elevation.

WC

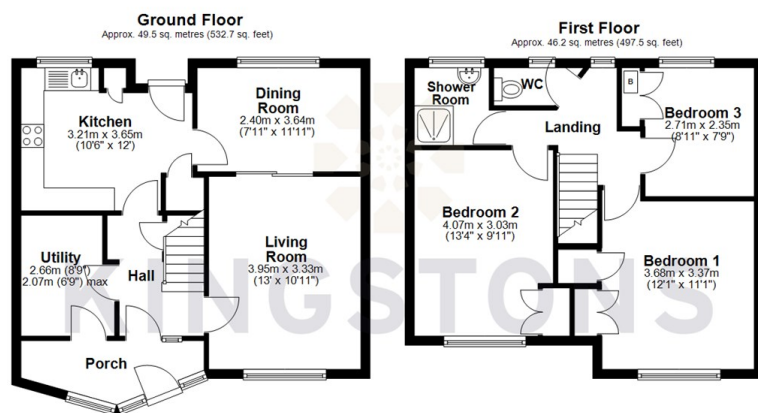
Window to rear elevation and fitted WC.

Outside

Side garden and rear enclosed garden backing onto fields.



Local Authority **Wiltshire**
Council Tax Band **B**
EPC Rating



Total area: approx. 95.7 sq. metres (1030.2 sq. feet)



KINGSTONS
Melksham Office

11 High Street, Melksham,
Wiltshire, SN12 6JR

Contact

01225709115
sales@kingstons.biz
www.kingstons.biz

Agents Note: Whilst every care has been taken to prepare these particulars, they are for guidance purposes only. All measurements are approximate and for general guidance purposes only and whilst every care has been taken to ensure accuracy, they should not be relied upon and potential buyers/tenants are advised to recheck the measurements.

