



Crescent Road

Melksham SN12 7EU

- Semi-Detached
- Close local Amenities
- Viewing Recommended
- Driveway Parking
- Walking Distance To Parks And Primary School
- In Need Of Some Modernisation

£230,000 Freehold





Hall

Radiator, door to living room and stairs leading up.

Living Room

12'1" x 19'1"

Window to front elevation, under stairs storage cupboard, radiator, door leading to kitchen/diner.

Kitchen/Diner

8'11" x 18'11"

Fitted with a matching range of base and eye level units with worktop space over, stainless steel sink, space for cooker, radiator, stairs, patio door leading to the garden and door leading to the garden room.

Garden Room

Window to side elevation, window to rear elevation, door leading to garden.



Landing

Window to side elevation, storage cupboard with boiler, doors leading to bathroom and bedrooms.

Bedroom One

12'0" x 10'4"

Window to front elevation, radiator.

Bedroom Two

9'1" x 10'10"

Window to rear elevation, radiator.

Bedroom Three

8'8" x 8'6"

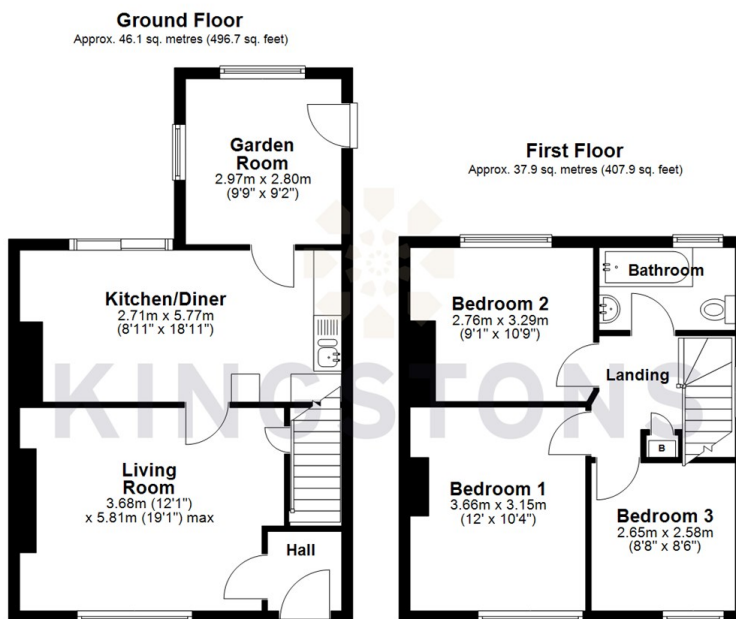
Window to front elevation, radiator.

Bathroom

Fitted with three piece suite comprising bath, wash hand basin and WC, window to rear elevation, radiator.



Local Authority **Wiltshire**
Council Tax Band **B**
EPC Rating



Total area: approx. 84.0 sq. metres (904.6 sq. feet)



KINGSTONS
Melksham Office

11 High Street, Melksham,
Wiltshire, SN12 6JR

Contact

01225709115
sales@kingstons.biz
www.kingstons.biz

Agents Note: Whilst every care has been taken to prepare these particulars, they are for guidance purposes only. All measurements are approximate and for general guidance purposes only and whilst every care has been taken to ensure accuracy, they should not be relied upon and potential buyers/tenants are advised to recheck the measurements.