



Grasmere

Bowerhill, Melksham SN12 6FQ

- No Onward Chain!
- Three Bedrooms
- Kitchen/Diner
- Schools Within Walking Distance
- Very Popular Street
- Garage and Parking
- Close to Shop and Pub
- Close to Kennet & Avon Canal

Asking Price £355,000 Freehold





Porch

External door front elevation, radiator, door to WC and opening to hall.

Hall

Stairs to first floor, under stairs cupboard, radiator and doors to living room and kitchen/diner.

Living Room

12'1" x 13'1"

Window to front elevation, radiator and double doors to kitchen/diner.

Kitchen/Diner

11'11" x 19'4"

Fitted with a matching range of base and eye level units with worktop space over, 1+1/2 bowl composite sink, integrated fridge/freezer, space for dishwasher and drinks fridge, eye level double oven, four ring gas hob, window to rear elevation, radiator, single door and double door to rear elevation.



WC

Fitted with two piece suite comprising WC and wash hand basin, window to side elevation and radiator.

Landing

Storage cupboard and doors to bedrooms and bathroom.

Bedroom One

12'4" x 12'0"

Window to rear elevation and radiator.

Bedroom Two

11'11" x 10'0"

Window to front elevation and radiator.

Bedroom Three

8'7" x 9'5"

Window to front elevation and radiator.

Bathroom

Fitted with three piece suite comprising p-shape bath with shower over and glass screen, wash hand basin with storage underneath and WC, window to rear elevation and heated towel rail.

Garage

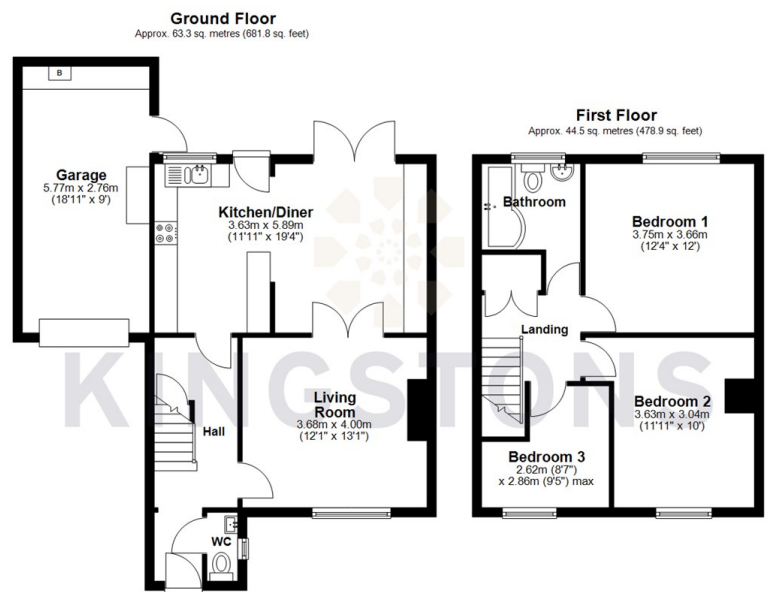
Attached garage with side door from garden, worktop space over, boiler plumbing and power, space for washing machine and tumble dryer and up and over garage door.

Outside

Front garden, parking for 2-3 vehicles, enclosed rear garden with outside tap and side access.



Local Authority **Wiltshire**
Council Tax Band **D**
EPC Rating **C**



Total area: approx. 107.8 sq. metres (1160.7 sq. feet)




KINGSTONS
Melksham Office

11 High Street, Melksham,
Wiltshire, SN12 6JR

Contact

01225709115
sales@kingstons.biz
www.kingstons.biz

Agents Note: Whilst every care has been taken to prepare these particulars, they are for guidance purposes only. All measurements are approximate and for general guidance purposes only and whilst every care has been taken to ensure accuracy, they should not be relied upon and potential buyers/tenants are advised to recheck the measurements.