



Mint Grove

Melksham SN12 6YN

- End Terrace
- Quiet location
- Immaculate Throughout
- Parking for 2-3 Vehicles
- Close to Local Schools and Amenities

Asking Price £259,950 Freehold



Hall

Radiator, doors leading to kitchen, living room and W/C, stairs to first floor.

Living Room

15'1" x 12'10"

Two windows to rear elevation, under stairs storage, two radiators, double door leading to rear garden.

Kitchen

10'1" x 5'10"

Fitted with a matching range of base and eye level units with worktop space over, stainless steel sink, integrated fridge/freezer, dishwasher and washing machine with window to front elevation.

WC

Fitted with two piece suite comprising WC and wash hand basin, window to side elevation and radiator.

Landing

Doors leading to bedrooms and bathroom.



Bedroom One

8'5" x 12'10"

Two windows to rear elevation and radiator.

Bedroom Two

8'1" x 12'11"

Two windows to front elevation, storage cupboard and radiator.

Bathroom

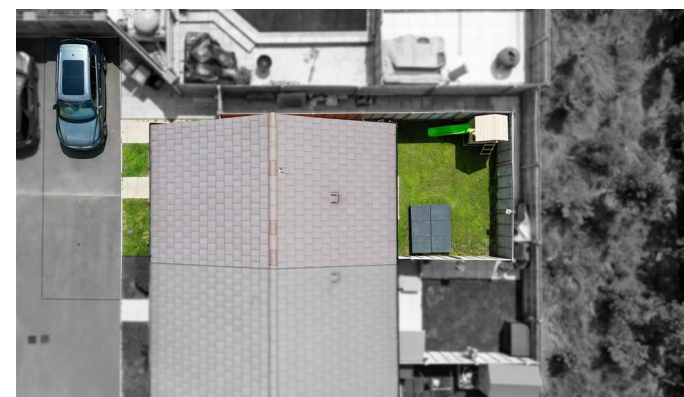
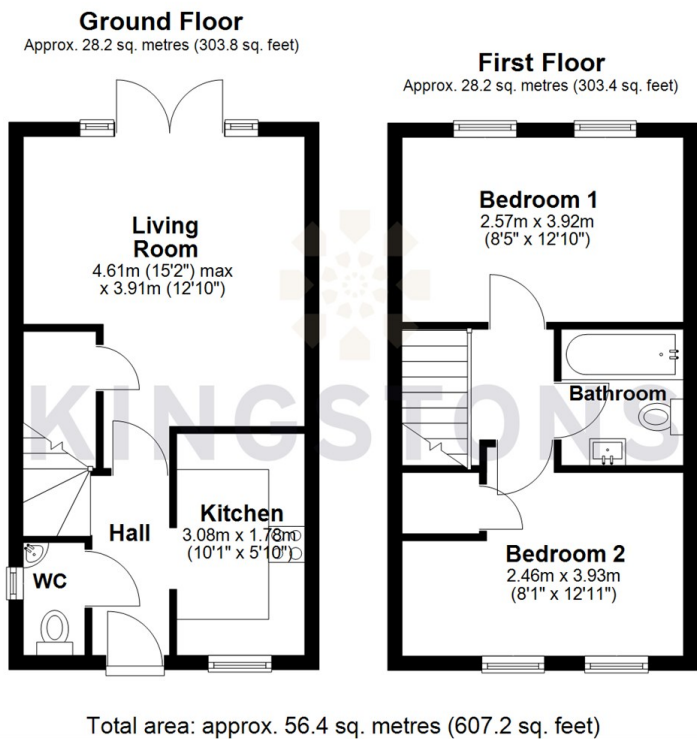
Fitted with three piece suite comprising bath with shower over and with glass screen, wash hand basin and WC with heated towel rail.

Outside

Parking to the front of the property for 2-3 vehicles, rear garden with side access.



Local Authority **Wiltshire**
Council Tax Band **B**
EPC Rating **B**



KINGSTONS
Melksham Office

11 High Street, Melksham,
Wiltshire, SN12 6JR

Contact

01225709115
sales@kingstons.biz
www.kingstons.biz

Agents Note: Whilst every care has been taken to prepare these particulars, they are for guidance purposes only. All measurements are approximate and for general guidance purposes only and whilst every care has been taken to ensure accuracy, they should not be relied upon and potential buyers/tenants are advised to recheck the measurements.