

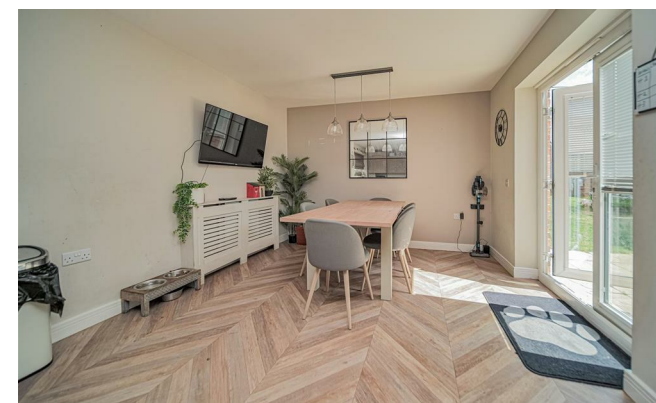


## Rennie Crescent

Melksham SN12 6GL

- Generous Size Family Home
  - Two Reception Rooms
  - Two En-suites
- Four Double Bedrooms
  - Garage and Parking
  - Kitchen/Diner

**Asking Price £485,000 Freehold**







### **Hallway**

Two windows and door to front elevation, doors to living room, kitchen/diner, study/bedrooms five and WC with stairs to first floor.

### **Living Room**

23'0" x 10'11"

Window to front elevation, two radiators, patio doors to rear elevation.

### **Kitchen/Diner**

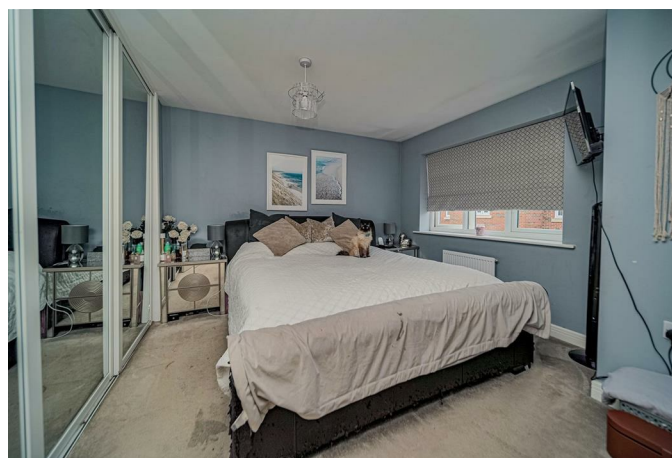
23'7" x 11'0"

Fitted with a matching range of base and eye level units with worktop space over, 1+1/2 bowl sink, integrated fridge/freezer, dishwasher and washing machine, eye level oven, window to side elevation, two radiators and patio doors to side elevation.

### **Study/Bedroom Five**

10'9" x 9'11"

Window to front elevation and radiator.



### **WC**

Fitted with a two piece suite comprising Window to rear, radiator, door to:

### **Landing**

Window to rear elevation, airing cupboard, radiator and doors to bedrooms and bathroom.

### **Bedroom One**

12'8" x 11'1"

Window to front elevation, fitted wardrobes, radiator and door to en-suite.

### **En-suite**

Fitted with a three piece suite comprising shower enclosure, wash hand basin, WC window to front elevation and heated towel rail.

### **Bedroom Two**

16'10" x 11'1"

Window to side elevation, radiator and door to en-suite.

### **En-suite**

Fitted with a three piece suite comprising shower enclosure, wash hand basin, WC window to side elevation and heated towel rail.

### **Bedroom Three**

10'10" x 11'2"

Window to front elevation and radiator.

### **Bedroom Four**

10'1" x 11'1"

Window to rear elevation and radiator.

### **Bathroom**

6'6" x 11'1"

Fitted with three piece suite comprising bath, wash hand basin and WC, window to side elevation and heated towel rail.

### **Outside**

Garage and driveway parking for approximately 2-3 vehicles. Rear garden with side access.





Local Authority **Wiltshire**  
Council Tax Band **F**  
EPC Rating **B**



  
**KINGSTONS**  
Melksham Office

11 High Street, Melksham,  
Wiltshire, SN12 6JR

### Contact

01225709115  
sales@kingstons.biz  
www.kingstons.biz

Agents Note: Whilst every care has been taken to prepare these particulars, they are for guidance purposes only. All measurements are approximate and for general guidance purposes only and whilst every care has been taken to ensure accuracy, they should not be relied upon and potential buyers/tenants are advised to recheck the measurements.