



Woodmand

Holt, Trowbridge BA14 6RH

- Popular Village of Holt
- Driveway Parking for 2-3 Vehicles
 - Conservatory
- Generous Bedrooms
- Three Bed Semi-Detached
- Quiet Cul-de-sac Location
 - Utility Room

Asking Price £350,000 Freehold



Hallway

External door, radiator, stairs to first floor, doors to kitchen/diner and living room.

Living Room

17'2" x 10'11"

Log burner, Windows to rear and front elevation, radiator.

Kitchen/Dining Room

9'5" x 17'1"

Fitted with a matching range of base and eye level units with worktop space over with ceramic 1+1/2 bowl sink, eye level oven, built-in gas hob, built-in microwave, window to rear elevation, under stairs storage cupboard, radiator and double door to conservatory.

Conservatory

Radiator and double door to garden.



Utility

7'4" x 9'3"

Fitted with a matching range of base and eye level units with worktop space over, built-in dishwasher, space for fridge/freezer and washing machine, window to front elevation, storage cupboard and radiator.

Landing

Window to rear elevation, doors to bedrooms, bathroom and WC.

Bedroom One

11'5" x 12'10"

Window to front elevation, fitted wardrobes and radiator.

Bedroom Two

10'8" x 10'11"

Window to front elevation, fitted wardrobes and radiator.

Bedroom Three

7'11" x 8'0"

Window to rear elevation, storage cupboard and radiator.

Bathroom

Fitted with two piece suite comprising wash hand basin and bath with shower over and glass screen, window to rear elevation and heated towel rail.

WC

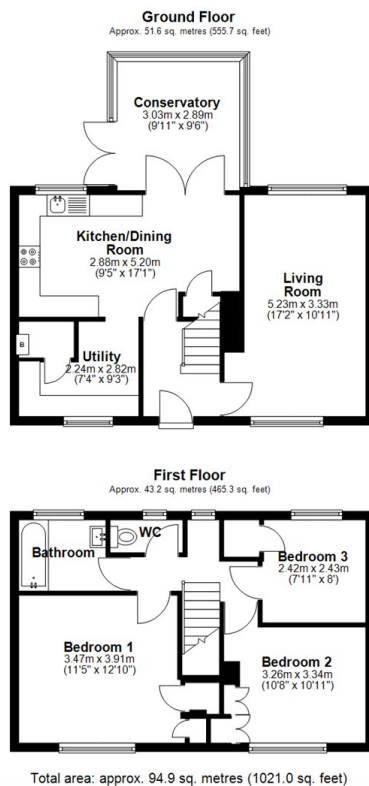
Window to rear elevation and WC.

Outside

Driveway parking for 2-3 vehicles and enclosed rear garden with side access.



Local Authority **Wiltshire**
Council Tax Band **B**
EPC Rating




KINGSTONS
Melksham Office

11 High Street, Melksham,
Wiltshire, SN12 6JR

Contact

01225709115
sales@kingstons.biz
www.kingstons.biz

Agents Note: Whilst every care has been taken to prepare these particulars, they are for guidance purposes only. All measurements are approximate and for general guidance purposes only and whilst every care has been taken to ensure accuracy, they should not be relied upon and potential buyers/tenants are advised to recheck the measurements.