



Ashley Close

Whitley, Melksham SN12 8RJ

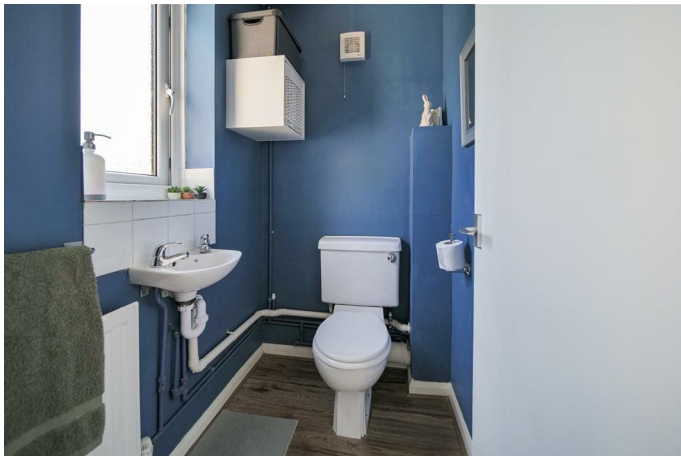
- *FLOOR PLAN AND VIDEO COMING SOON*
- Walking Distance To Local Primary School
- Four Generous Sized Bedrooms
- Village Location
- Garage and Driveway Parking

Asking Price £460,000 Freehold





Location





Local Authority
Council Tax Band **D**
EPC Rating **C**




KINGSTONS
Melksham Office

11 High Street, Melksham,
Wiltshire, SN12 6JR

Contact

01225709115
sales@kingstons.biz
www.kingstons.biz

Agents Note: Whilst every care has been taken to prepare these particulars, they are for guidance purposes only. All measurements are approximate and for general guidance purposes only and whilst every care has been taken to ensure accuracy, they should not be relied upon and potential buyers/tenants are advised to recheck the measurements.