



Portman Road Melksham SN12 8AW

- No Chain
- Near Green Space
- Chippenham Side of Town
- Generous Garden
- Outbuilding
- Walking Distance from Town Centre

Asking Price £275,000 Freehold



Hall

External door to front elevation, window to side elevation, utility cupboard, under stairs storage, stairs for first floor and doors to Living Room and Kitchen.

Living Room

11'8" x 13'7"

Window to front elevation and radiator.

Kitchen

9'11" x 10'11"

Fitted with a matching range of base and eye level units with worktop space over, stainless steel sink, space for fridge, freezer, washing machine and cooker, windows to rear and side elevation radiator, door to WC and opening to Dining Room.

Dining Room

9'11" x 9'2"

Window to rear elevation, radiator and external door to rear elevation.



WC

Fitted with a two piece suite comprising WC and wash hand basin with window to side elevation.

Landing

Door to side elevation and doors to bedrooms and bathroom.

Bedroom One

11'9" x 11'11"

Window to front, built in cupboard and radiator.

Bedroom Two

9'11" x 11'11"

Window to rear elevation fitted wardrobes and radiator.

Bedroom Three

8'7" x 8'4"

Window to side elevation and radiator.

Bathroom

Fitted with three piece suite comprising shower enclosure in wet room style, WC and wash hand basin. Window to side elevation, airing cupboard and heated towel rail.

Outside

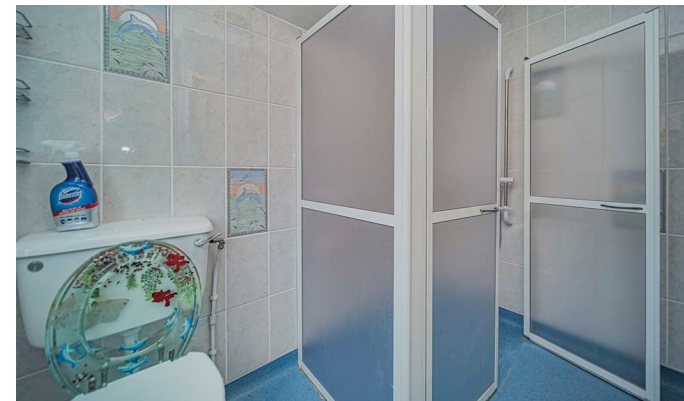
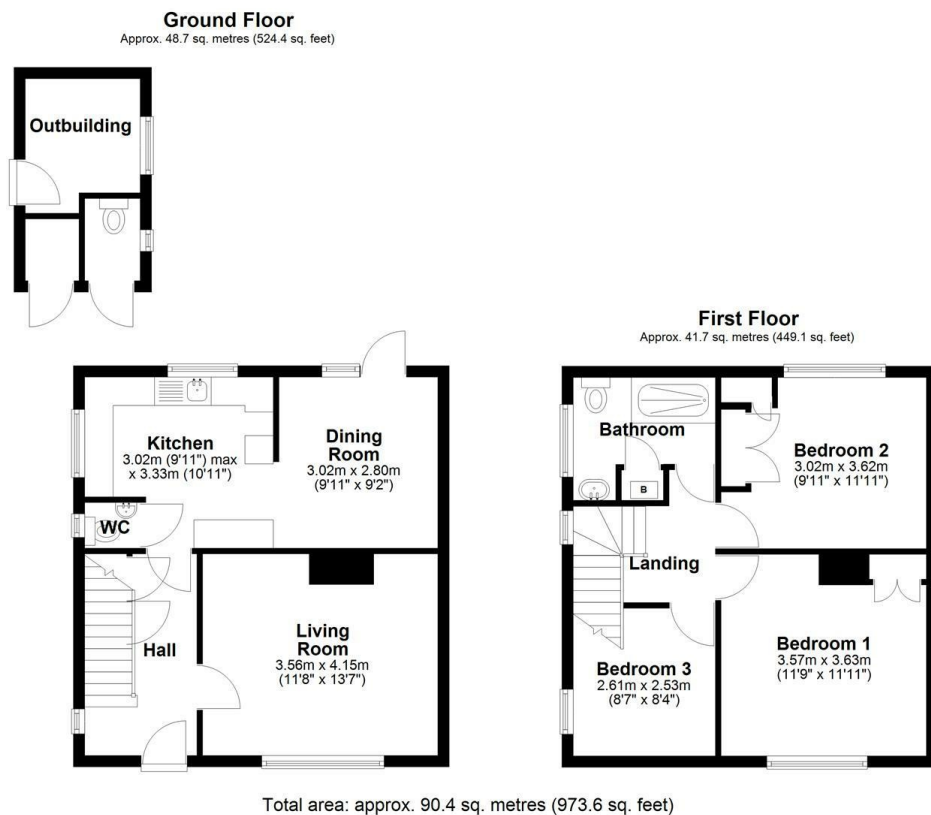
Driveway parking to front and generous enclosed rear garden with side access including Outbuilding.

Outbuilding

Split into three areas with external doors. One storage cupboard, one WC with window to side elevation and one storage room with window to side elevation.



Local Authority **Wiltshire**
Council Tax Band **B**
EPC Rating




KINGSTONS
Melksham Office

11 High Street, Melksham,
Wiltshire, SN12 6JR

Contact

01225709115
sales@kingstons.biz
www.kingstons.biz

Agents Note: Whilst every care has been taken to prepare these particulars, they are for guidance purposes only. All measurements are approximate and for general guidance purposes only and whilst every care has been taken to ensure accuracy, they should not be relied upon and potential buyers/tenants are advised to recheck the measurements.