



Mills Road

Melksham, Wiltshire SN12 7DT

- No Onward Chain
- Driveway Parking
- Rear Garden
- Garage
- Utility Room
- Three Well Proportioned Bedrooms

£245,000 Freehold





Porch

External door, window to side and front elevation, radiator and door to Living Room.

Living Room

11'5" x 17'3"

Window to front elevation, two radiators and door Dining Room.

Dining Room

11'11" x 9'7"

Window to rear elevation, stairs to first floor and doors to Utility and Kitchen.

Kitchen

11'8" x 7'3"

Fitted with a matching range of base and eye level units with worktop space over, 1+1/2 bowl stainless steel sink, space for fridge/freezer, washing machine and cooker, window to rear elevation and storage cupboard.



Utility

3'7" x 9'1"

Window to side and rear elevation, radiator and external door to Garden.

Landing

Storage cupboard, radiator and doors to Bedrooms and Bathroom.

Bedroom One

11'2" x 9'8"

Window to front elevation, fitted wardrobes and radiator.

Bedroom Two

10'1" x 10'3"

Window to rear elevation, over stairs storage and radiator.

Bedroom Three

8'0" x 7'3"

Window to front elevation, radiator and storage cupboard.

Bathroom

5'5" x 7'1"

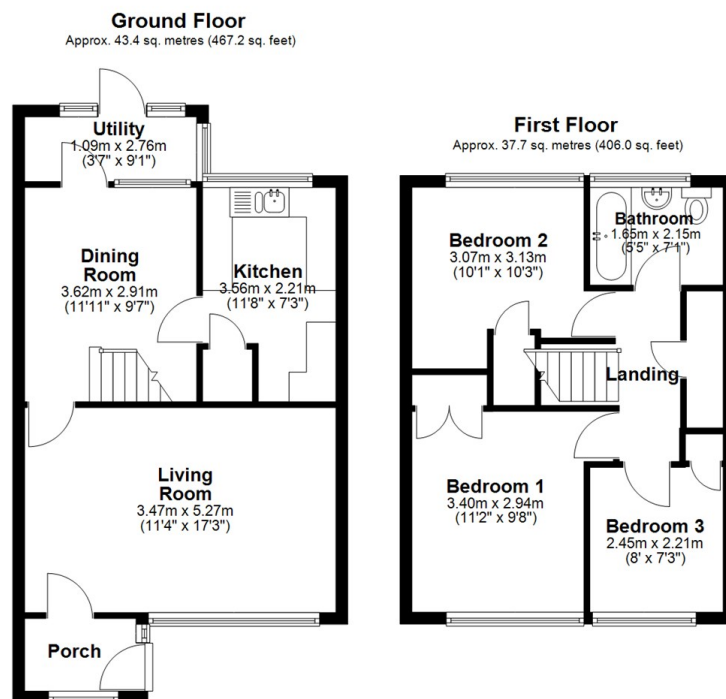
Fitted with three piece suite comprising bath with shower over with glass screen, wash hand basin and WC, window to rear elevation and heated towel rail.

Outside

Garage in a block, driveway parking for approximately two vehicles and enclosed garden with rear access.



Local Authority **Wiltshire**
Council Tax Band **B**
EPC Rating



Total area: approx. 81.1 sq. metres (873.3 sq. feet)



KINGSTONS
Melksham Office

11 High Street, Melksham,
Wiltshire, SN12 6JR

Contact

01225709115
sales@kingstons.biz
www.kingstons.biz

Agents Note: Whilst every care has been taken to prepare these particulars, they are for guidance purposes only. All measurements are approximate and for general guidance purposes only and whilst every care has been taken to ensure accuracy, they should not be relied upon and potential buyers/tenants are advised to recheck the measurements.

