

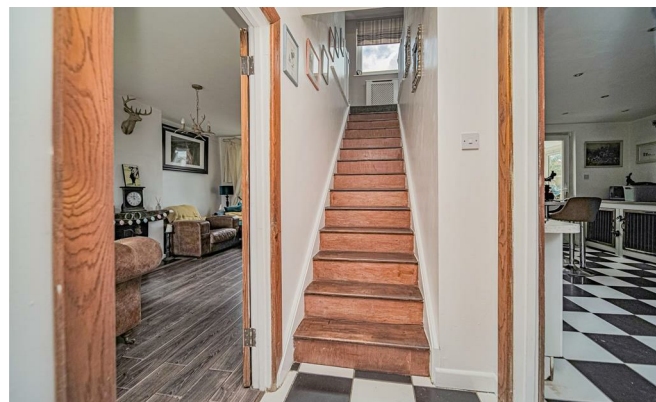


Fullers Close

Melksham SN12 7BX

- Three Bedrooms
- Generous Garden
- Quiet Area
- Kitchen/Diner
- Conservatory

Asking Price £270,000 Freehold





Hall

External door, stairs to first floor, door to Living Room and opening to Kitchen/Diner.

Living Room

16'4" x 10'4"

Window to front elevation, radiator and patio doors to rear.

Kitchen/Diner

16'4" x 17'6"

Fitted with a matching range of base and eye level units with worktop space over, stainless steel sink, space for fridge/freezer, dishwasher, washing machine and cooker, window to front and rear elevation under stairs storage, radiator and opening to Office.



Office

6'5" x 5'1"

Conservatory

9'9" x 12'5"

Windows to side and rear elevation, radiator and patio doors.

Landing

Window to rear elevation, radiator and doors to Bedrooms and Bathroom.

Bedroom One

11'5" x 13'9"

Window to front elevation, storage cupboards and radiator.

Bedroom Two

9'8" x 14'2"

Window to front elevation and radiator.

Bedroom Three

6'4" x 11'2"

Window to rear elevation and radiator.

Bathroom

4'7" x 7'9"

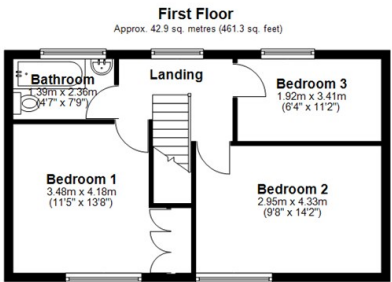
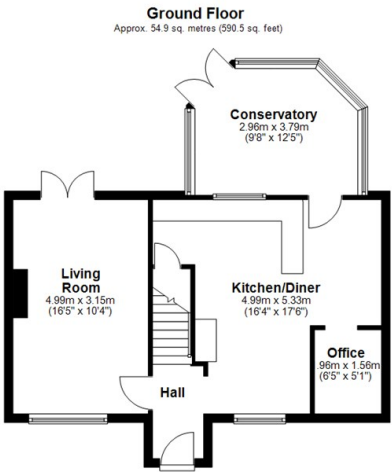
Fitted with three piece suite comprising bath with shower over and glass screen, wash hand basin and WC with window to rear elevation.

Outside

Enclosed rear garden with rear access.



Local Authority **Wiltshire**
Council Tax Band **B**
EPC Rating



Total area: approx. 97.7 sq. metres (1051.7 sq. feet)




KINGSTONS
Melksham Office

11 High Street, Melksham,
Wiltshire, SN12 6JR

Contact

01225709115
sales@kingstons.biz
www.kingstons.biz

Agents Note: Whilst every care has been taken to prepare these particulars, they are for guidance purposes only. All measurements are approximate and for general guidance purposes only and whilst every care has been taken to ensure accuracy, they should not be relied upon and potential buyers/tenants are advised to recheck the measurements.