



## Wyvern Road

Melksham SN12 6BY

- End of Chain
- Three Bedrooms
- Kitchen/Diner
- Downstairs Toilet
- Popular Bowerhill
- Detached
- Garage
- En-suite

**£290,000 Freehold**





### **Hall**

14'4" x 6'1"

External door from front, doors to Kitchen/Diner, Living Room and WC, stairs to first floor and radiator.

### **Kitchen/Diner**

18'6" x 9'0"

Fitted with a matching range of base and eye level units with worktop space over, 1+1/2 bowl stainless steel sink, space for fridge/freezer, dishwasher and washing machine, built-in oven and hob, window to front elevation, two radiators and patio doors to Garden.

### **WC**

3'10" x 6'1"

Fitted with a two piece suite comprising WC and wash hand basin, window to rear elevation and radiator.



### **Living Room**

18'6" x 10'4"

Window to front and side elevation and two radiators.

## **Landing**

Window to rear elevation, storage cupboard, radiator and doors to Bedrooms and Bathroom.

## **Bedroom One**

15'10" x 10'8"

Window to side elevation, fitted wardrobes, radiator and door to En-suite.

## **En-suite**

5'1" x 9'3"

Fitted with three piece suite comprising WC, wash hand basin and shower enclosure, window to front elevation and radiator.

## **Bedroom Two**

9'9" x 9'2"

Window to front elevation, fitted wardrobes and radiator.

## **Bedroom Three**

6'6" x 9'2"

Window to side elevation, fitted wardrobe and radiator.

## **Bathroom**

6'3" x 7'6"

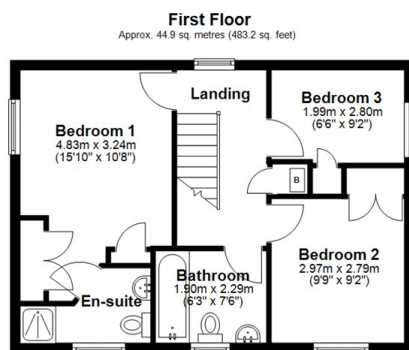
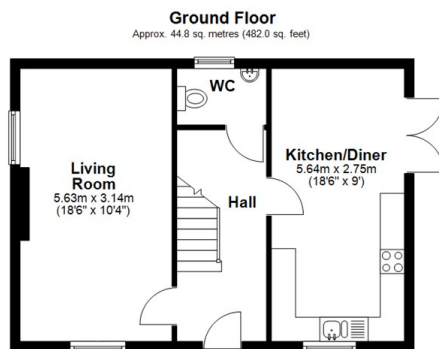
Fitted with three piece suite comprising bath with shower over, wash hand basin and WC, window to front elevation and radiator.

## **Outside**

Enclosed garden including gated driveway and Garage.



Local Authority **Wiltshire**  
Council Tax Band **D**  
EPC Rating



Total area: approx. 89.7 sq. metres (965.3 sq. feet)



**KINGSTONS**  
**Melksham Office**

11 High Street, Melksham,  
Wiltshire, SN12 6JR

### Contact

01225709115  
sales@kingstons.biz  
www.kingstons.biz

Agents Note: Whilst every care has been taken to prepare these particulars, they are for guidance purposes only. All measurements are approximate and for general guidance purposes only and whilst every care has been taken to ensure accuracy, they should not be relied upon and potential buyers/tenants are advised to recheck the measurements.