



Chiltern Close Melksham SN12 7RS

- Three Bedrooms
- Parking
- Modern Boiler
- Garage
- Conservatory
- Lounge/Diner

Asking Price £215,000 Freehold





Kitchen

10'2" x 10'2"

Door from outside. fitted with a matching range of base and eye level units with worktop space over, 1+1/2 bowl sink, space for fridge and washing machine, built-in oven and hob, window to front elevation, radiator and door to Lounge/Diner.

Lounge/Diner

12'2" x 18'8"

Two windows to rear elevation, radiator, stairs to first floor and door to Conservatory.

Conservatory

Windows to rear and side elevation, radiator and patio doors to Garden.

Garage

17'2" x 10'0"

Up and over door.



Landing

Storage cupboard and doors to Bedrooms and Bathroom.

Bedroom One

12'4" x 12'11"

Window to front elevation, built-in wardrobe and radiator.

Bedroom Two

8'10" x 12'11"

Window to rear elevation, built-in wardrobe and radiator.

Bedroom Three

8'0" x 8'1"

Window to rear elevation, storage cupboard and radiator.

Bathroom

Fitted with two piece suite comprising with shower enclosure and wash hand basin, window to front elevation, radiator and heated towel rail.

WC

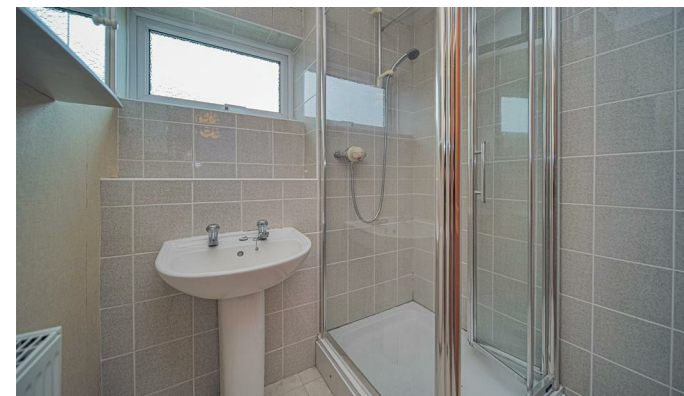
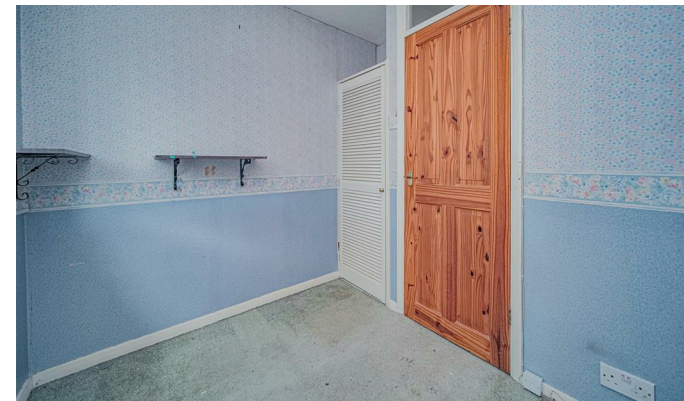
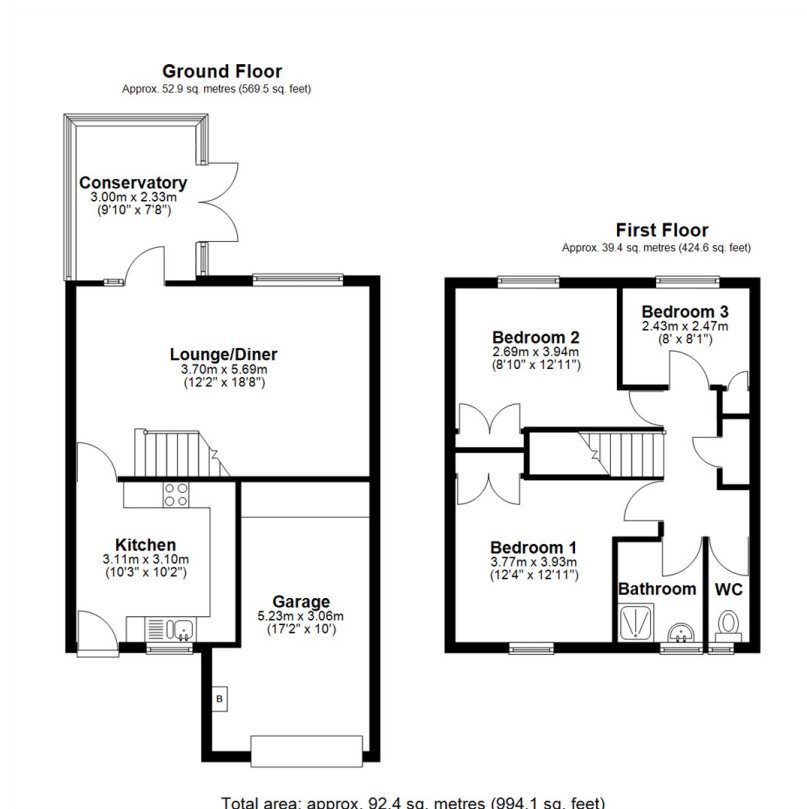
Window to front elevation and WC.

Outside

Driveway parking to front with enclosed rear Garden.



Local Authority **Wiltshire**
Council Tax Band **B**
EPC Rating




KINGSTONS
Melksham Office

11 High Street, Melksham,
Wiltshire, SN12 6JR

Contact

01225709115
sales@kingstons.biz
www.kingstons.biz

Agents Note: Whilst every care has been taken to prepare these particulars, they are for guidance purposes only. All measurements are approximate and for general guidance purposes only and whilst every care has been taken to ensure accuracy, they should not be relied upon and potential buyers/tenants are advised to recheck the measurements.