



## Foundry Close Melksham SN12 8FD

- Garage
- En-Suite
- Ground Floor
- Two Bedrooms

**£163,000 Leasehold**





### **Hall**

Door from entrance, storage cupboard, radiator and doors to Living Room, Bedrooms and Bathroom.

### **Living Room / Kitchen/Diner**

16'4" x 14'10"

Open plan Living room / Kitchen/Diner with two windows to side elevation and two radiators.

### **Bedroom One**

14'4" x 10'11"

Windows to front and side elevation fitted wardrobe, radiator and door to En-suite.

### **En-suite**

Fitted with three piece suite comprising shower enclosure, wash hand basin and WC with radiator.



### **Bedroom Two**

16'4" x 9'3"

Window to side elevation, radiator and storage cupboard.



### **Bathroom**

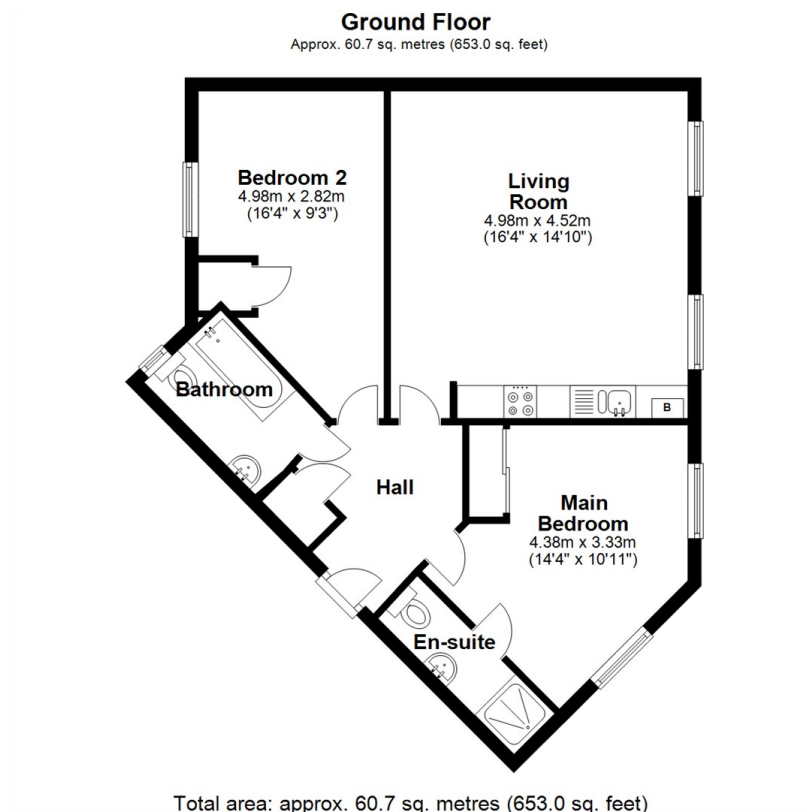
Fitted with three piece suite comprising bath with hand shower attachment, wash hand basin and WC, window to rear elevation and radiator.

### **Outside**

Garage in a block with up and over door.



Local Authority **Wiltshire**  
Council Tax Band **A**  
EPC Rating **B**



**KINGSTONS**  
**Melksham Office**

11 High Street, Melksham,  
Wiltshire, SN12 6JR

#### Contact

01225709115  
sales@kingstons.biz  
www.kingstons.biz

Agents Note: Whilst every care has been taken to prepare these particulars, they are for guidance purposes only. All measurements are approximate and for general guidance purposes only and whilst every care has been taken to ensure accuracy, they should not be relied upon and potential buyers/tenants are advised to recheck the measurements.