



Hornchurch Road

Bowerhill, Melksham SN12 6QE

- Popular Bowerhill
- Garage and Parking
- Downstairs Toilet
- Short Walk to Park and Canal
- Three Bedrooms
 - En-Suite
 - Kitchen/Diner

Asking Price £259,500 Freehold





Inner Porch

Door from front, radiator and doors to Living Room and WC.

Living Room

18'0" x 13'9"

Window to front elevation, under stair cupboard and storage, radiator, stairs to first floor and door to Kitchen/Diner.

Kitchen/Diner

9'6" x 13'9"

Fitted with a matching range of base and eye level units with worktop space over with underlighting, 1+1/2 bowl sink, built-in dishwasher, space for fridge/freezer and washing machine, built-in oven and ceramic hob, window to rear elevation, radiator and sliding doors to rear Garden.

WC

5'0" x 3'3"

Fitted with two piece suite wash hand basin and WC and radiator.



First Floor Landing

Doors to Bedrooms and Bathroom.

Bedroom One

10'4" x 13'9"

Window to front elevation, built-in wardrobe and door to En-suite.

En-suite

4'9" x 4'7"

Fitted with three piece suite with shower and enclosure, wash hand basin and WC, window to front elevation and heated towel rail.

Bedroom Two

11'7" x 7'8"

Window to rear elevation, radiator and built-in wardrobe.

Bedroom 3

10'8" x 5'11"

Window to rear elevation, Storage cupboard over stairs and radiator.

Bathroom

5'3" x 7'9"

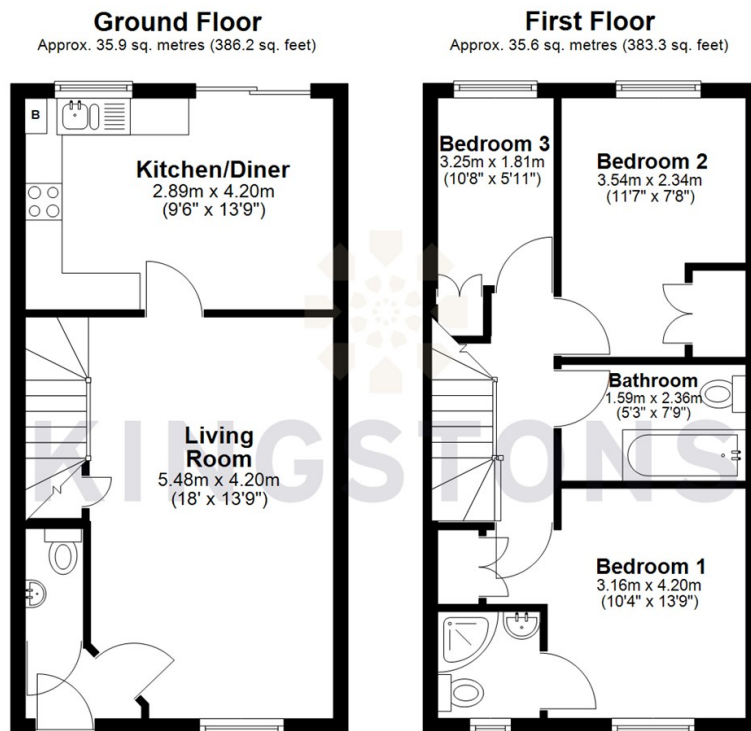
Fitted with three piece suite comprising of bath with shower attachment, wash hand basin and WC.

Outside

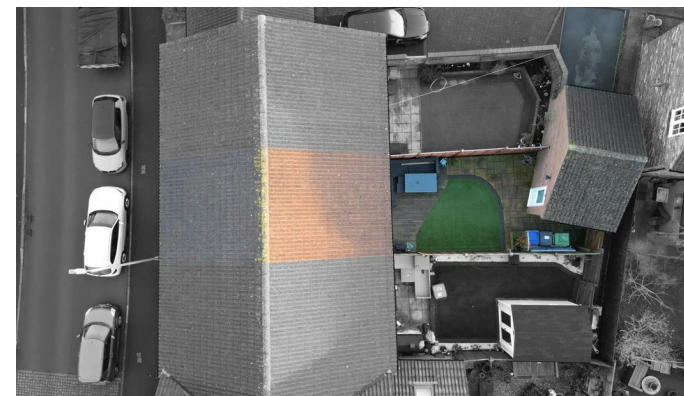
Garage and parking to rear of property with rear access to enclosed garden.



Local Authority **Wiltshire**
Council Tax Band **C**
EPC Rating **C**



Total area: approx. 71.5 sq. metres (769.6 sq. feet)




KINGSTONS
Melksham Office

11 High Street, Melksham,
Wiltshire, SN12 6JR

Contact

01225709115
sales@kingstons.biz
www.kingstons.biz

Agents Note: Whilst every care has been taken to prepare these particulars, they are for guidance purposes only. All measurements are approximate and for general guidance purposes only and whilst every care has been taken to ensure accuracy, they should not be relied upon and potential buyers/tenants are advised to recheck the measurements.