



## Woodrow Road Forest SN12 7RG

- Beautiful Countryside Views
- Some Modernising Required
  - Garage and Parking
  - Popular Area
- No Chain
- Three Bedrooms
- Detached Bungalow
- Melksham Outskirts

**Asking Price £350,000 Freehold**





### **Hall**

Door from front and doors to Living Room, Kitchen, Bathroom and Bedrooms.

### **Living Room**

12'0" x 13'11"

Bay window to front elevation, window to side elevation and two radiators.

### **Kitchen**

13'5" x 11'7"

Fitted with a matching range of base and eye level units with worktop space over, 1+1/2 bowl sink, space for oven and dish washer, windows to side and rear elevation, airing cupboard with folding door, radiator and door to Utility.



### **Utility**

4'2" x 11'4"

Windows to side and rear elevation, plumbing for washing machine, sink and door to rear Garden.

### **Bedroom One**

12'0" x 14'9"

Bay window to front elevation, radiator, built in surround storage and door to En-suite.

### **En-suite**

6'7" x 3'1"

Fitted with three piece suite comprising with shower, wash hand basin and WC with radiator.

### **Bedroom Two**

13'5" x 10'0"

Window to rear elevation and radiator.

### **Bedroom Three**

9'9" x 6'6"

Window to rear elevation and radiator.

### **Bathroom**

9'9" x 5'3"

Fitted with three piece suite comprising bath, wash hand basin and WC, window to rear elevation and radiator,

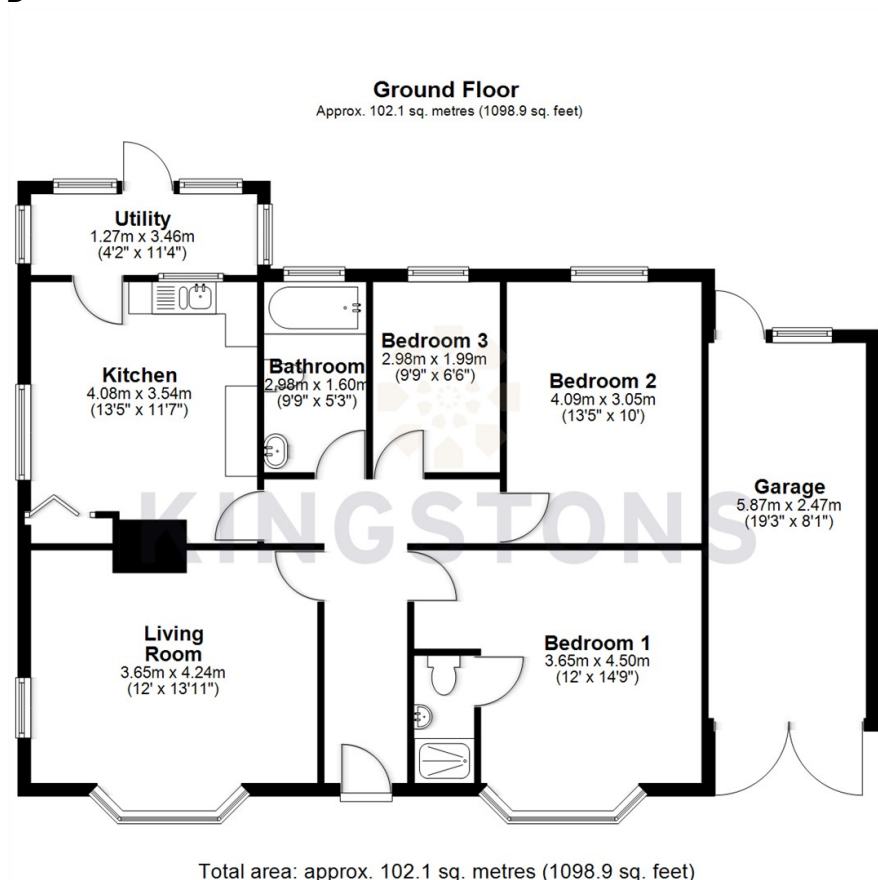
### **Outside**

Generous plot overlooking green space behind, divided front garden split between lawn and driveway parking. Garage with power and double door opening to front elevation, door and window to rear elevation. Rear garden is mostly patio with some green areas and summerhouse.





Local Authority **Wiltshire**  
Council Tax Band **D**  
EPC Rating **D**



**KINGSTONS**  
**Melksham Office**

11 High Street, Melksham,  
Wiltshire, SN12 6JR

**Contact**

01225709115  
sales@kingstons.biz  
www.kingstons.biz

Agents Note: Whilst every care has been taken to prepare these particulars, they are for guidance purposes only. All measurements are approximate and for general guidance purposes only and whilst every care has been taken to ensure accuracy, they should not be relied upon and potential buyers/tenants are advised to recheck the measurements.

