



Pound Close

Semington, Trowbridge BA14 6JP

- Popular Village of Semington
- Garage
- Three Bedrooms
- Generous Garden
- Parking for approx. Four Cars
- Semi-Detached

Asking Price £365,000 Freehold



Hallway

Stairs to first floor, door to Living Room and opening to Kitchen/Diner.

Living Room

13'1" x 14'2"

Window to front elevation, wood burner and radiator.

Kitchen/Dining Room

10'11" x 20'5"

Fitted with a matching range of base and eye level units with worktop space over, sink with drainer, integrated Zanussi double oven, Zanussi induction hob and grill, integrated dishwasher, space for double fridge/freezer, window to side and rear elevation, storage cupboard, column radiator and doors to Utility and Rear Garden.



Utility

8'9" x 8'2"

Fitted with a base units with space for washing machine, window to side elevation, radiator, doors to WC, Porch and boiler cupboard.

WC

Window to rear elevation and fitted with two piece suite comprising wash hand basin and WC.

Porch

Windows to side, front and rear elevation with door to Outside.

Landing

Window over stairs to side elevation and doors to Bedrooms One, Two, Three, Storage Cupboard, Bathroom and access to partly boarded loft with ladder.

Bedroom One

11'6" x 11'1"

Window to front elevation and radiator.

Bedroom Two

11'6" x 12'0"

Two windows to rear elevation, radiator and fitted wardrobes.

Bedroom Three

7'7" x 9'1"

Window to front elevation, over stairs storage and radiator.

Bathroom

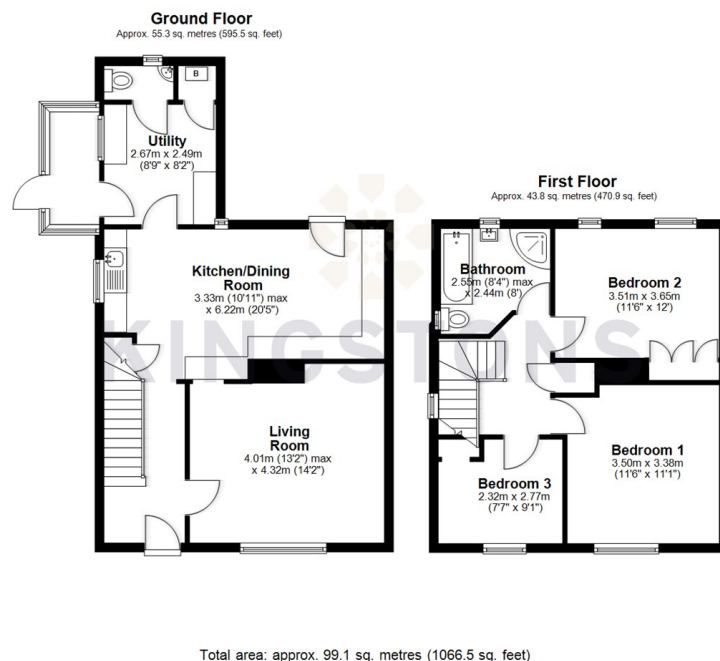
Fitted with four piece suite comprising bath, wash hand basin and WC, window to rear and side elevation with heated towel rail.

Outside

Block paved driveway for approx. four cars with pod point EV charger and garage. Enclosed rear garden with decking area including power and built in lights and Summerhouse with power.



Local Authority **Wiltshire**
Council Tax Band **C**
EPC Rating **E**




KINGSTONS
Melksham Office

11 High Street, Melksham,
Wiltshire, SN12 6JR

Contact

01225709115
sales@kingstons.biz
www.kingstons.biz

Agents Note: Whilst every care has been taken to prepare these particulars, they are for guidance purposes only. All measurements are approximate and for general guidance purposes only and whilst every care has been taken to ensure accuracy, they should not be relied upon and potential buyers/tenants are advised to recheck the measurements.