

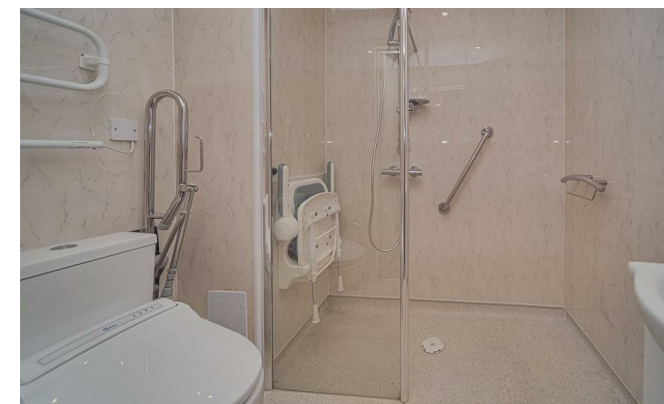


KINGSTONS

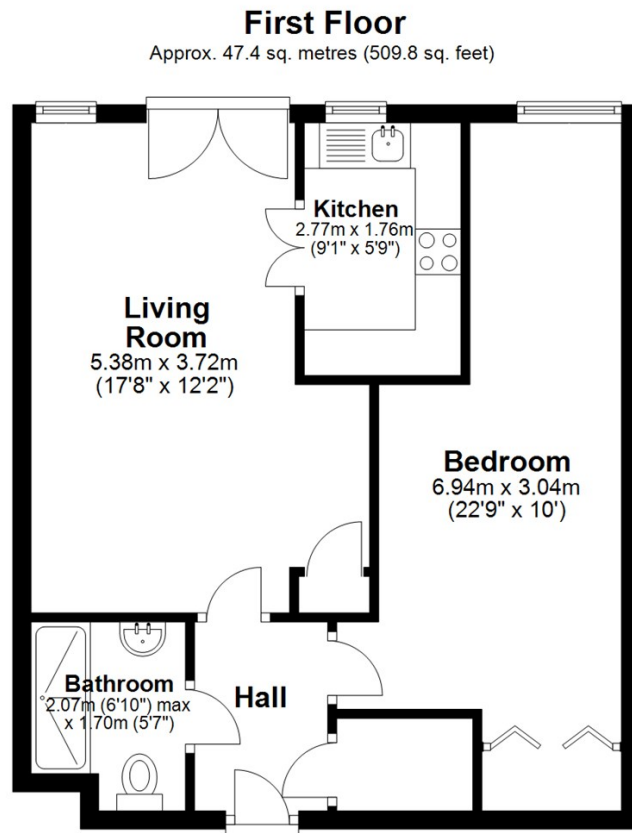
Lowbourne Melksham SN12 7DY

- End of Chain
- Top Floor
- Town Centre
- Wet Room style Bathroom
- Complex with a Lift
- Ready to Move In

Asking Price £75,000 Leasehold



Local Authority **Wiltshire**
Council Tax Band **B**
EPC Rating **B**



Total area: approx. 47.4 sq. metres (509.8 sq. feet)



KINGSTONS
Melksham Office

11 High Street, Melksham,
Wiltshire, SN12 6JR

Contact

01225709115
sales@kingstons.biz
www.kingstons.biz

Agents Note: Whilst every care has been taken to prepare these particulars, they are for guidance purposes only. All measurements are approximate and for general guidance purposes only and whilst every care has been taken to ensure accuracy, they should not be relied upon and potential buyers/tenants are advised to recheck the measurements.