



Savernake Avenue

Melksham SN12 7HE

- Bungalow
- Two Double Bedrooms
- Close to Green Space
- Semi-detached
- Two Reception Rooms
- Garden

Asking Price £265,000 Freehold





Porch

Door to side elevation, windows to front and side elevation and door to Living Room.

Living Room

Window to front elevation, radiator, wood burner, door to Hallway, opening to Dining Room and sliding door to Kitchen.

Kitchen

Fitted with range of base and eye level units with worktop space over, sink with mixer tap, window to rear elevation and door to rear garden.

Dining Room / Bedroom

Window to rear elevation.

Hallway

Doors to Bedrooms One and Two, Bathroom and Airing Cupboard.

Bedroom One

Window to front elevation.



Bedroom Two

Window to rear elevation and radiator.

Bathroom

Fitted with a three piece suite comprising shower, wash hand basin and WC, window to rear and radiator.

Outside

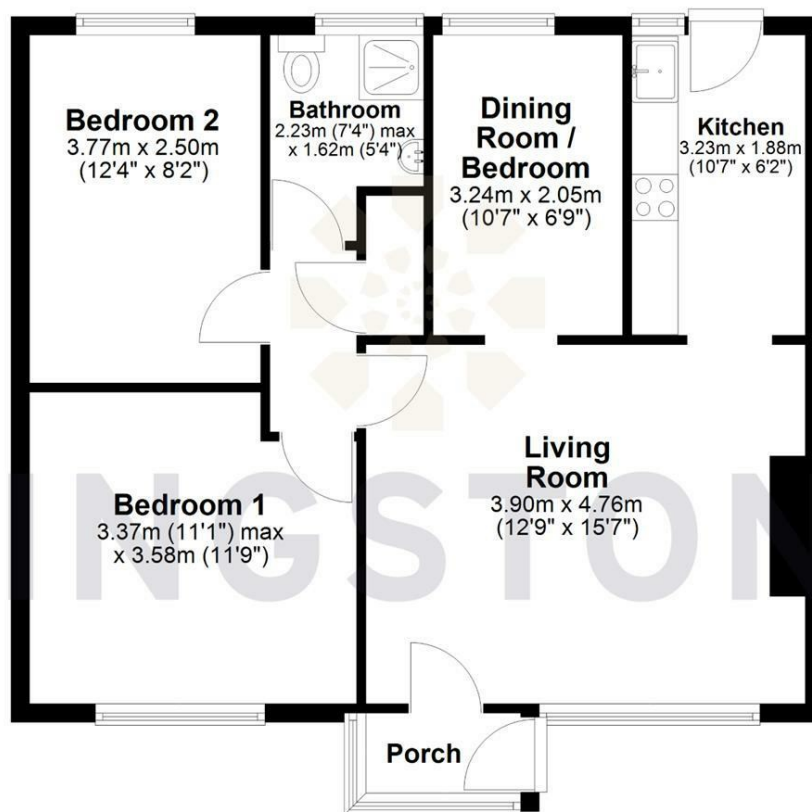
Patio Garden to rear with Garage.



Local Authority **Wiltshire**
Council Tax Band **B**
EPC Rating **E**

Ground Floor

Approx. 62.4 sq. metres (671.8 sq. feet)



Total area: approx. 62.4 sq. metres (671.8 sq. feet)



KINGSTONS

Melksham Office

11 High Street, Melksham,
Wiltshire, SN12 6JR

Contact

01225709115
sales@kingstons.biz
www.kingstons.biz

Agents Note: Whilst every care has been taken to prepare these particulars, they are for guidance purposes only. All measurements are approximate and for general guidance purposes only and whilst every care has been taken to ensure accuracy, they should not be relied upon and potential buyers/tenants are advised to recheck the measurements.