



The Mobile Home Park

Melksham SN12 6DS

- End of Chain
- En-Suite
- Gas Central Heating
- Generous Size
- Two Bedrooms

Asking Price £200,000 Freehold



Entrance Hall

Door from outside and into Lounge/Diner. Window to side elevation and storage cupboard with boiler.

Lounge/Diner

Bay windows to front and side elevation, radiators, door to Kitchen and Patio Doors to side elevation.

Kitchen

Fitted with a matching range of base and eye level units with worktop space over, sink unit with single drainer and mixer tap, integrated dishwasher, washing machine and fridge/freezer, built-in four ring gas hob with extractor hood over, window to side elevation, door to hallway and door outside to side elevation.

Hallway

Radiator, storage cupboard and doors to Bedroom one, Bedroom two and Bathroom.

Bedroom One

Window to rear elevation, fitted wardrobes, radiator and door to en-suite.

En-Suite

Fitted with three piece suite comprising of walk-in shower, wash hand basin with storage under and WC, window to side elevation and heated towel rail.



Bedroom Two

Window to rear elevation, radiator and fitted wardrobe.

Bathroom

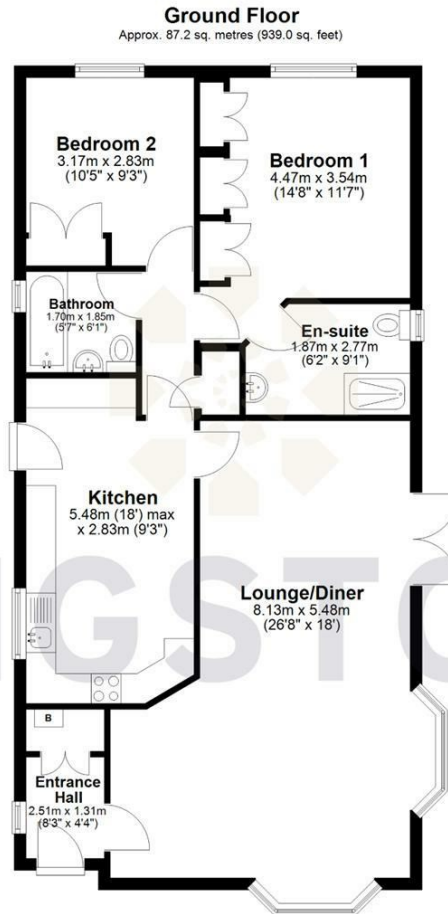
Fitted with three piece suite comprising of bath with shower over and glass screen, wash hand basin with storage under and WC, window to rear elevation and heated towel rail.

Garden

Wrap around garden including brick-built shed.



Local Authority **Wiltshire**
Council Tax Band **A**
EPC Rating **na**



Total area: approx. 87.2 sq. metres (939.0 sq. feet)




KINGSTONS
Melksham Office

11 High Street, Melksham,
Wiltshire, SN12 6JR

Contact

01225709115
sales@kingstons.biz
www.kingstons.biz

Agents Note: Whilst every care has been taken to prepare these particulars, they are for guidance purposes only. All measurements are approximate and for general guidance purposes only and whilst every care has been taken to ensure accuracy, they should not be relied upon and potential buyers/tenants are advised to recheck the measurements.