




KINGSTONS

St Michaels Road

Melksham, Wiltshire SN12 6HN

- Incredibly Popular Location
- Extended Kitchen/Diner
 - Sunny Garden
 - Garage
- Semi-Detached
- Three Bedrooms
- Close to Aloeric School
- Driveway

Asking Price £300,000 Freehold





Hall

Window and door to front elevation, door to living room, stairs to first floor and radiator.

Living Room

Window to front elevation, sliding door to rear elevation, doors to kitchen/diner and cupboard, two radiators.

Kitchen/Diner

Fitted with a matching range of base and eye level units with worktop space over, 1+1/2 bowl sink unit with single drainer and mixer tap, space for fridge/freezer, dishwasher and washing machine, built-in electric fan assisted oven, built-in four ring gas hob with pull out extractor hood over, two windows to rear elevation, door to side elevation, door to cloakroom and garage, two radiators.

Cloakroom

Fitted with a two piece suite comprising of wash hand basin and low-level WC, window to side elevation.

Landing

Doors to bedrooms, bathroom and cupboard.

Bedroom One

Window to rear elevation and radiator.



Bedroom Two

Window to front elevation and radiator.

Bedroom Three

Window to front elevation and radiator.

Bathroom

Fitted with a three piece suite comprising of bath with shower over and glass screen, wash hand basin and low-level WC, window to rear elevation and heated towel rail.

Garden

Fully enclosed with side access, mainly laid to lawn with an area of patio and space for shed.

Garage

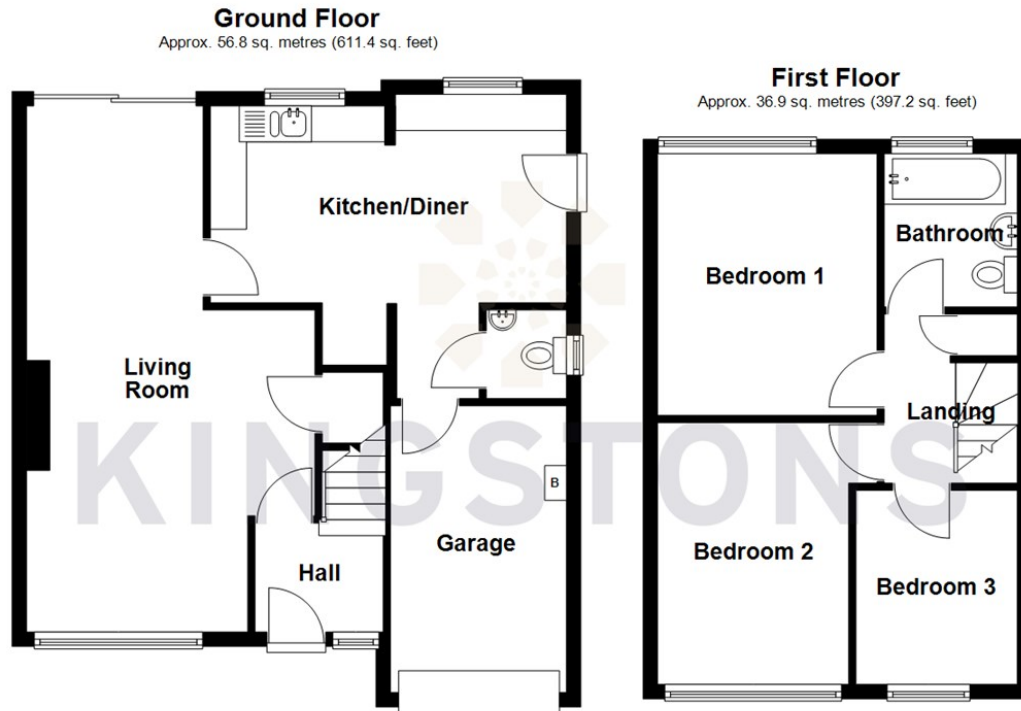
Up and over door to front elevation, boiler, power and light.

Driveway

Located to the front of the property with space for two vehicles.



Local Authority **Wiltshire**
Council Tax Band **C**
EPC Rating



Total area: approx. 93.7 sq. metres (1008.6 sq. feet)




KINGSTONS
Melksham Office

11 High Street, Melksham,
Wiltshire, SN12 6JR

Contact

01225709115
sales@kingstons.biz
www.kingstons.biz

Agents Note: Whilst every care has been taken to prepare these particulars, they are for guidance purposes only. All measurements are approximate and for general guidance purposes only and whilst every care has been taken to ensure accuracy, they should not be relied upon and potential buyers/tenants are advised to recheck the measurements.