



Union Street Melksham SN12 7PR

- Centre Of Town
- Character Home
 - Extended
 - Driveway
- Great Size Garden
- Three Bedrooms
 - Garage

Asking Price £375,000 Freehold



Porch

Door and windows to front elevation, door and windows to hall.

Hall

Doors to WC, living room and kitchen/diner, stairs to first floor and radiator.

WC

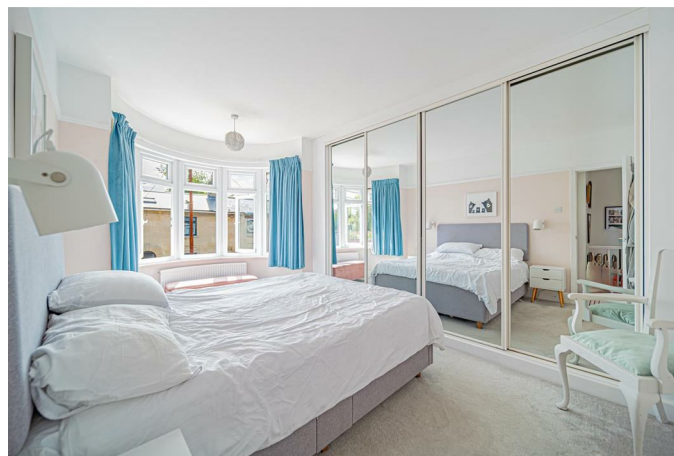
Fitted with low-level WC.

Living Room

Bow window to front elevation, fireplace, opening to kitchen/diner and radiator.

Kitchen/Diner

Fitted with a matching range of base and eye level units with worktop space over, sink unit with single drainer and mixer tap, integrated fridge/freezer and dishwasher, space for washing machine, built-in eye level electric fan assisted oven, built-in four ring electric hob with extractor hood over, built-in microwave, double doors to rear elevation, window to rear elevation, door to side elevation and radiator.



Landing

Doors to bedroom and bathroom, window to side elevation.

Bedroom One

Bow window to front elevation, built in wardrobe with sliding doors and radiator.

Bedroom Two

Window to rear elevation and radiator.

Bedroom Three

Window to front elevation and radiator.

Bathroom

Fitted with a three piece suite comprising of bath with shower over and glass screen, wash hand basin and low-level WC, window to rear elevation and heated towel rail.

Garden

Fully enclosed with side access, mainly laid to lawn with raised decked area with seating and entertaining, section woodchipped children's play area, further decked area and space for a shed.

Garage

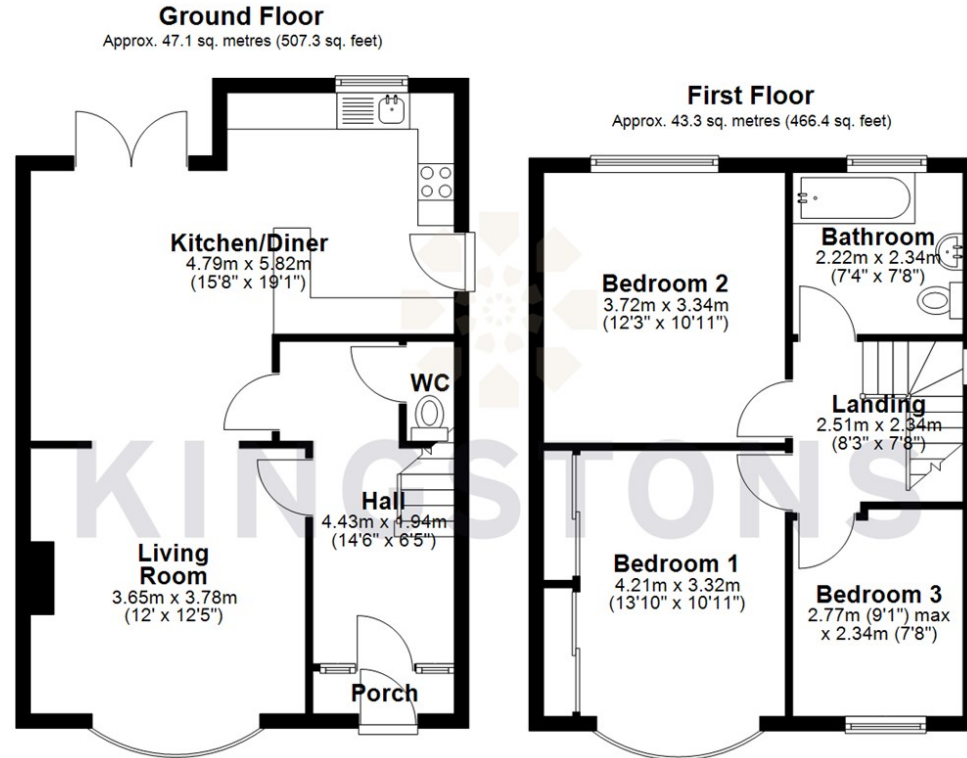
Located to the side of the property with up and over door, power and light.

Driveway

Located to the front of the property with space for approx. three vehicles.



Local Authority
Council Tax Band **C**
EPC Rating



Total area: approx. 90.5 sq. metres (973.7 sq. feet)



KINGSTONS
Melksham Office

11 High Street, Melksham,
Wiltshire, SN12 6JR

Contact

01225709115
sales@kingstons.biz
www.kingstons.biz

Agents Note: Whilst every care has been taken to prepare these particulars, they are for guidance purposes only. All measurements are approximate and for general guidance purposes only and whilst every care has been taken to ensure accuracy, they should not be relied upon and potential buyers/tenants are advised to recheck the measurements.

