



Lime Avenue Melksham SN12 6UY

- Popular Location
- Ample Living Space
- Main Bedroom with En-suite
- Extended
- Three Reception Rooms
- Generous Garden

£415,000 Freehold



Hall

Door to front elevation, doors to living room and kitchen/breakfast room, stairs to first floor and radiator.

Living Room

Window to front elevation, fireplace, opening to dining room and radiator.

Dining Room

Sliding door to rear elevation and radiator.

Kitchen/Breakfast Room

Fitted with a matching range of base and eye level units with worktop space over, 1+1/2 bowl sink unit with single drainer and mixer tap, built in eye level electric fan assisted double oven with grill function and four ring electric hob, integrated fridge/freezer and dishwasher, space for washing machine, window to front elevation, opening to conservatory and radiator.

Conservatory

Windows to rear and side elevation and double doors to side elevation.

Inner Hallway

Space for storage with cupboard and door to shower room.



Shower Room

Fitted with a three piece suite comprising of corner shower, pedestal wash hand basin and low level WC with Heated towel rail.

Landing

Doors to bedrooms and bathroom. radiator.

Main Bedroom

Window to rear elevation, door to en-suite and radiator.

En-suite

Fitted with a three piece suite comprising of double shower with sliding glass door, pedestal wash hand basin and low level WC with tiled splashbacks, window to side elevation and heated towel rail.

Bedroom 2

Two windows to front elevation and radiator.

Bedroom 3

Window to front elevation and radiator.

Bedroom 4

Window to side elevation and radiator.

Bathroom

Fitted with a three piece suite comprising of bath with hand shower attachment, vanity wash hand basin

and low level WC with tiled splashbacks, window to rear elevation and radiator.

Garden

Fully enclosed with front and rear access, laid to areas of patio with mature border, summer house, bar and space for hot tub.

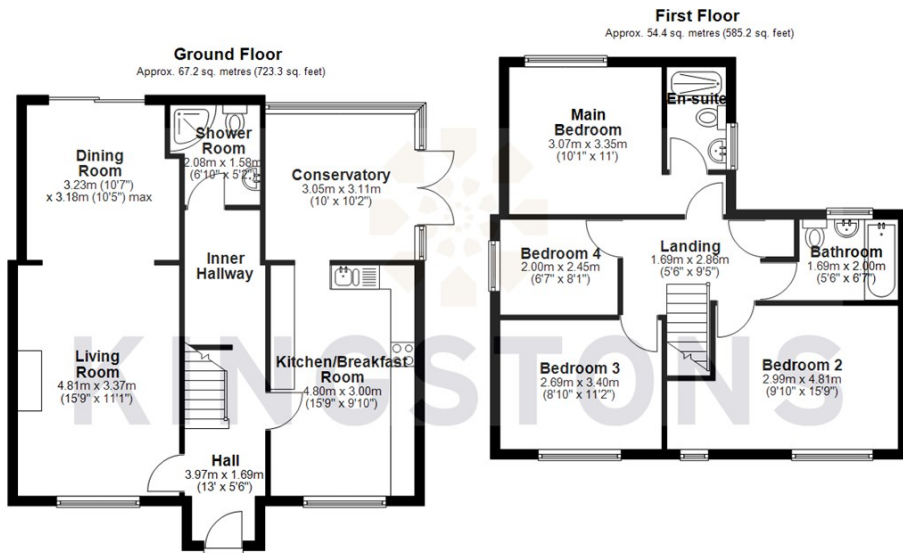
Garage

Located to the rear of the property with up and over door, eaves storage, power and light.

Driveway

Located to the front of the garage with space for two vehicles.





Total area: approx. 121.6 sq. metres (1308.5 sq. feet)



KINGSTONS
Melksham Office

11 High Street, Melksham,
Wiltshire, SN12 6JR

Contact

01225709115
sales@kingstons.biz
www.kingstons.biz

Agents Note: Whilst every care has been taken to prepare these particulars, they are for guidance purposes only. All measurements are approximate and for general guidance purposes only and whilst every care has been taken to ensure accuracy, they should not be relied upon and potential buyers/tenants are advised to recheck the measurements.