

# Mount Echo Drive E4

Guide Price £825,000

FREEHOLD

 4 BEDROOMS

 1 BATHROOMS

 2 RECEPTIONS

## Details

- 4 BEDROOMS
- SEMI DETACHED
- GARAGE
- CHAIN FREE
- OFF STREET PARKING
- HOME OFFICE

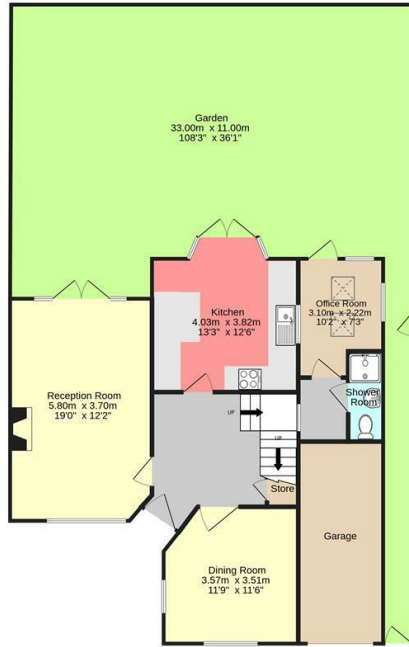
EPC RATING: 51 (E)  
COUNCIL TAX: F

BREENS

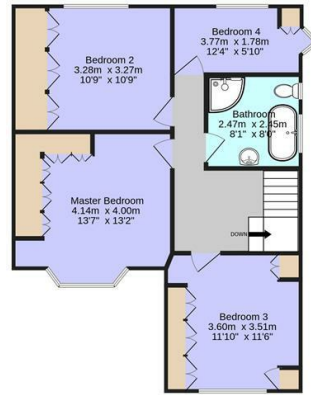




GROUND FLOOR  
81.2 sq.m. (874 sq.ft.) approx.



1ST FLOOR  
65.0 sq.m. (700 sq.ft.) approx.



MOUNT ECHO DRIVE, CHINGFORD, E4 7LA

TOTAL FLOOR AREA: 146.2 sq.m. (1574 sq.ft.) approx.

Whilst every attempt has been made to ensure the accuracy of the floorplan contained herein, measurements of doors, windows, rooms and any other items are approximate and no responsibility is taken for any error, omission or mis-statement. This plan is for illustrative purposes only and should be used as such by any prospective purchaser. The services, systems and appliances shown have not been tested and no guarantee as to their operability or efficiency can be given.  
Made with Metrepro C2025



BREENS

## Contact Us

02085315454

highampark@breens.property

www.breens.property

2 Broadway Parade, Winchester Road, Highams Park,  
E4 9LG

All sizes are approximate. The Agent has not tested any apparatus, equipment, fixtures and fittings, or services and so cannot verify that they are in working order or fit for the purpose. A buyer is advised to obtain verification from their Solicitors or Surveyor. Photographs are for illustration purposes only and may depict items, which are not for sale or included in the sale price. References to tenure of a property are based upon Information supplied by the vendor. The agent has not had sight of the title documents, a buyer is advised to obtain verification from their solicitor.

Money Laundering Regulations 2003: Intending purchasers will be asked to produce identification, documentation at a later stage and we would ask for your co-operation in order that there will be no delay in agreeing the sale. These particulars are intended to give a fair description of the property only and are in no way guaranteed, nor do of any contract. They are issued on the express condition that all negotiations are conducted through Breens Estate Agents. All subject to contract and to being unsold.