

Meadway EN3

£535,000

FREEHOLD

 3 BEDROOMS

 1 BATHROOMS

 1 RECEPTIONS

Details

- ONE OF FREEZY WATER'S PRESTIGIOUS TURNINGS
- 1930S BUILT EXTENDED SEMI-DETACHED HOUSE
- THREE BEDROOMS
- LIVING RECEPTION ROOM
- GREAT LOCATION
- GROUND FLOOR CLOAKROOM
- FIRST FLOOR FAMILY BATHROOM
- WELL MAINTAINED 100 FT REAR GARDEN
- FRONT OFF STREET PARKING FOR SEVERAL VEHICLES
- GARAGE

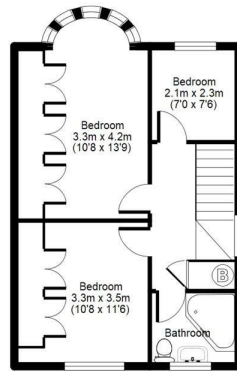
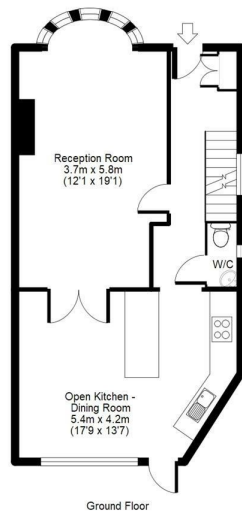
EPC RATING: 40 (E)
COUNCIL TAX: D

BREENS



Meadway, EN3

APPROX GROSS INTERNAL FLOOR AREA: 1046 sq. ft / 97 sq. m



For identification only - Not to scale
Measure into the bays - Copyright of Bravo EPC



Contact Us

020 8804 8989

enfield@breens.property

www.breens.property

557- 559 Hertford Road, Enfield, EN3 5UQ

All sizes are approximate. The Agent has not tested any apparatus, equipment, fixtures and fittings, or services and so cannot verify that they are in working order or fit for the purpose. A buyer is advised to obtain verification from their Solicitors or Surveyor. Photographs are for illustration purposes only and may depict items, which are not for sale or included in the sale price. References to tenure of a property are based upon Information supplied by the vendor. The agent has not had sight of the title documents, a buyer is advised to obtain verification from their solicitor.

Money Laundering Regulations 2003: Intending purchasers will be asked to produce identification, documentation at a later stage and we would ask for your co-operation in order that there will be no delay in agreeing the sale. These particulars are intended to give a fair description of the property only and are in no way guaranteed, nor do of any contract. They are issued on the express condition that all negotiations are conducted through Breens Estate Agents. All subject to contract and to being unsold.