

Beaconsfield Road EN3

£475,000

FREEHOLD

 3 BEDROOMS

 1 BATHROOMS

 1 RECEPTIONS

Details

- VICTORIAN END TERRACED FAMILY HOME
- SPACIOUS THROUGH LOUNGE
- FITTED KITCHEN
- GROUND FLOOR CLOAKROOM / WC
- FIRST FLOOR FAMILY BATHROOM
- GAS CENTRAL HEATING AND DOUBLE GLAZING
- COURTYARD REAR GARDEN
- SEPARATE TRIANGULAR SIDE GARDEN
- OFF STREET PARKING
- SPACIOUS THROUGHOUT

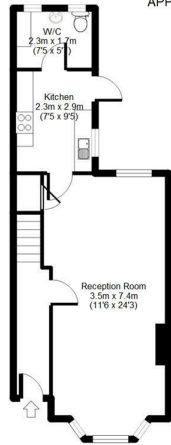
EPC RATING: 58 (D)
COUNCIL TAX: C

BREENS



Beaconsfield Road, Enfield, EN3

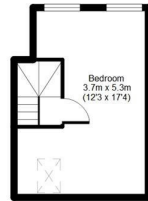
APPROX GROSS INTERNAL FLOOR AREA: 1020 sq. ft / 95 sq. m



Ground Floor



First Floor



Second Floor

For identification purposes only
Measurements are approx and not to scale



BREENS

Contact Us

020 8804 8989

enfield@breens.property

www.breens.property

557- 559 Hertford Road, Enfield, EN3 5UQ

All sizes are approximate. The Agent has not tested any apparatus, equipment, fixtures and fittings, or services and so cannot verify that they are in working order or fit for the purpose. A buyer is advised to obtain verification from their Solicitors or Surveyor. Photographs are for illustration purposes only and may depict items, which are not for sale or included in the sale price. References to tenure of a property are based upon Information supplied by the vendor. The agent has not had sight of the title documents, a buyer is advised to obtain verification from their solicitor.

Money Laundering Regulations 2003: Intending purchasers will be asked to produce identification, documentation at a later stage and we would ask for your co-operation in order that there will be no delay in agreeing the sale. These particulars are intended to give a fair description of the property only and are in no way guaranteed, nor do of any contract. They are issued on the express condition that all negotiations are conducted through Breens Estate Agents. All subject to contract and to being unsold.