

Pandorea House, Tismore £620,000

LEASEHOLD

 3 BEDROOMS

 2 BATHROOMS

 1 RECEPTIONS

Details

- LEASE - APPROXIMATELY 990 YEARS REMAINING
- SERVICE CHARGE - APPROXIMATELY £2,723.42 PER ANNUM
- GROUND RENT - APPROXIMATELY £350 PER ANNUM
- THREE BEDROOMS
- THIRD FLOOR
- 24 HOUR CONCIERGE
- RESIDENT GYM WITH STEAM AND SAUNA ON SITE

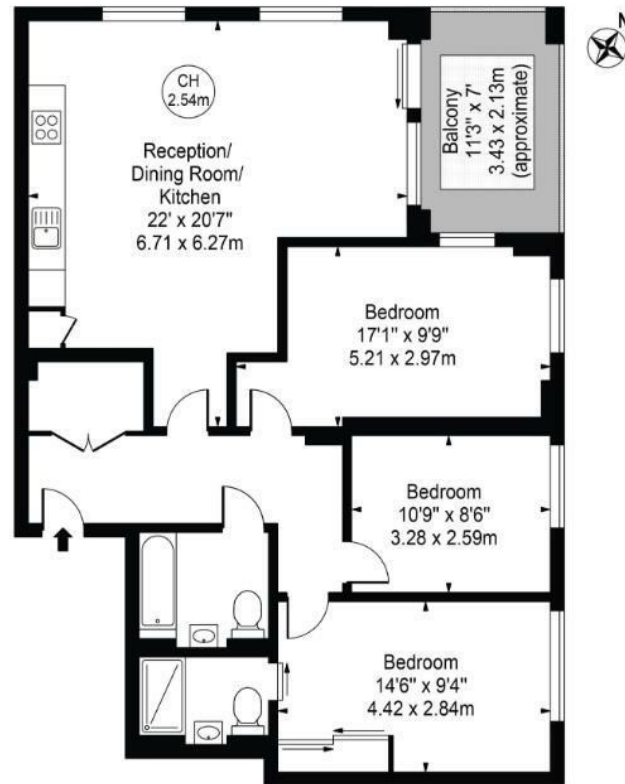
EPC RATING: 85 (B)
COUNCIL TAX: E

BREENS



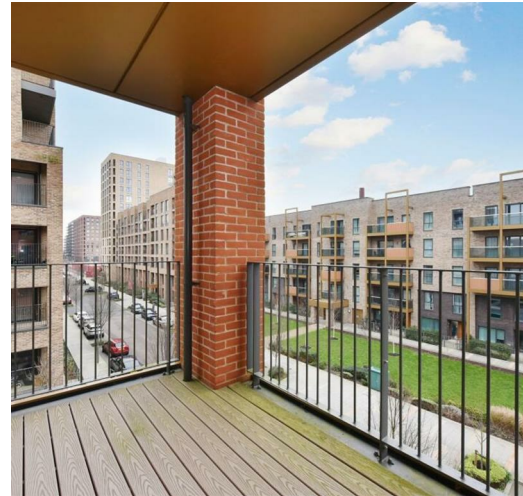
Pandorea House

Approx. Gross Internal Area 961 Sq Ft - 89.27 Sq M



For Illustration Purposes Only - Not To Scale

This floor plan should be used as a general outline for guidance only and does not constitute in whole or in part an offer or contract. Any intending purchaser or lessee should satisfy themselves by inspection, searches, enquiries and full survey as to the correctness of each statement. Any areas, measurements or distances quoted are approximate and should not be used to value a property or be the basis of any sale or let.



BREENS

Contact Us

020 8804 8989

enfield@breenstateagents.co.uk

www.breenstateagents.co.uk

557- 559 Hertford Road, Enfield, EN3 5UQ

All sizes are approximate. The Agent has not tested any apparatus, equipment, fixtures and fittings, or services and so cannot verify that they are in working order or fit for the purpose. A buyer is advised to obtain verification from their Solicitors or Surveyor. Photographs are for illustration purposes only and may depict items, which are not for sale or included in the sale price. References to tenure of a property are based upon Information supplied by the vendor. The agent has not had sight of the title documents, a buyer is advised to obtain verification from their solicitor.

Money Laundering Regulations 2003: Intending purchasers will be asked to produce identification, documentation at a later stage and we would ask for your co-operation in order that there will be no delay in agreeing the sale. These particulars are intended to give a fair description of the property only and are in no way guaranteed, nor do of any contract. They are issued on the express condition that all negotiations are conducted through Breens Estate Agents. All subject to contract and to being unsold.