

M|V

MARRIOTT VERNON

ESTATE AGENTS

Flat 1, Archers Court 13A Nottingham Road, South Croydon, CR2 6LN

Offers in excess of £215,000



M|V

MARRIOTT VERNON



M | V
MARRIOTT VERNON

Flat 1, Archers Court 13A Nottingham Road South Croydon, CR2 6LN

Well Presented One Bedroom Ground Floor Flat
Located Opposite Croydon Bowling & Sports Club
No Onward Chain
Gated Allocated Parking
Close to South and East Croydon Stations

Sought After South Croydon Location
Bright and Spacious Open Plan Reception/Kitchen
Communal Gardens
Share of Freehold - 963 Year Lease
Easy Access Shops, Bars and Restaurants

Marriott Vernon present to the market this well presented one bedroom ground floor flat with allocated parking, share of freehold and no onward chain. Conveniently situated just a short walk from South Croydon station and a hive of local amenities, the property provides bright, well planned accommodation with stylish interiors and neutral finish throughout - ideal for first time or investment purchasers. Features include a generous open plan reception/kitchen, modern bathroom, ample inbuilt storage, quality floor coverings, electric heating and double glazing.

Accommodation comprises entrance hall with inbuilt storage, leading into the light and spacious, open plan dual aspect reception/kitchen with feature bay and ample space for both relaxing and dining. The kitchen area comprises a modern range of matching white fronted wall and base units with work surfaces and metro-tiled splash-back, incorporating inset sink unit, induction hob with overhead extractor and electric oven below, and further space for appliances. There is a well sized double bedroom with useful inbuilt storage, plus a bathroom with white three piece suite.

The property is superbly located within easy access of South and East Croydon stations, offering superb connections into Central London, Gatwick and the South Coast. Croydon town centre is close-by providing an array of shops and amenities, as well as leisure facilities including a cinema complex. The 'Restaurant Quarter' is also just a stroll away for a diverse selection of bars and restaurants whilst Croydon Bowling & sports Club is opposite.

Offers in excess of £215,000



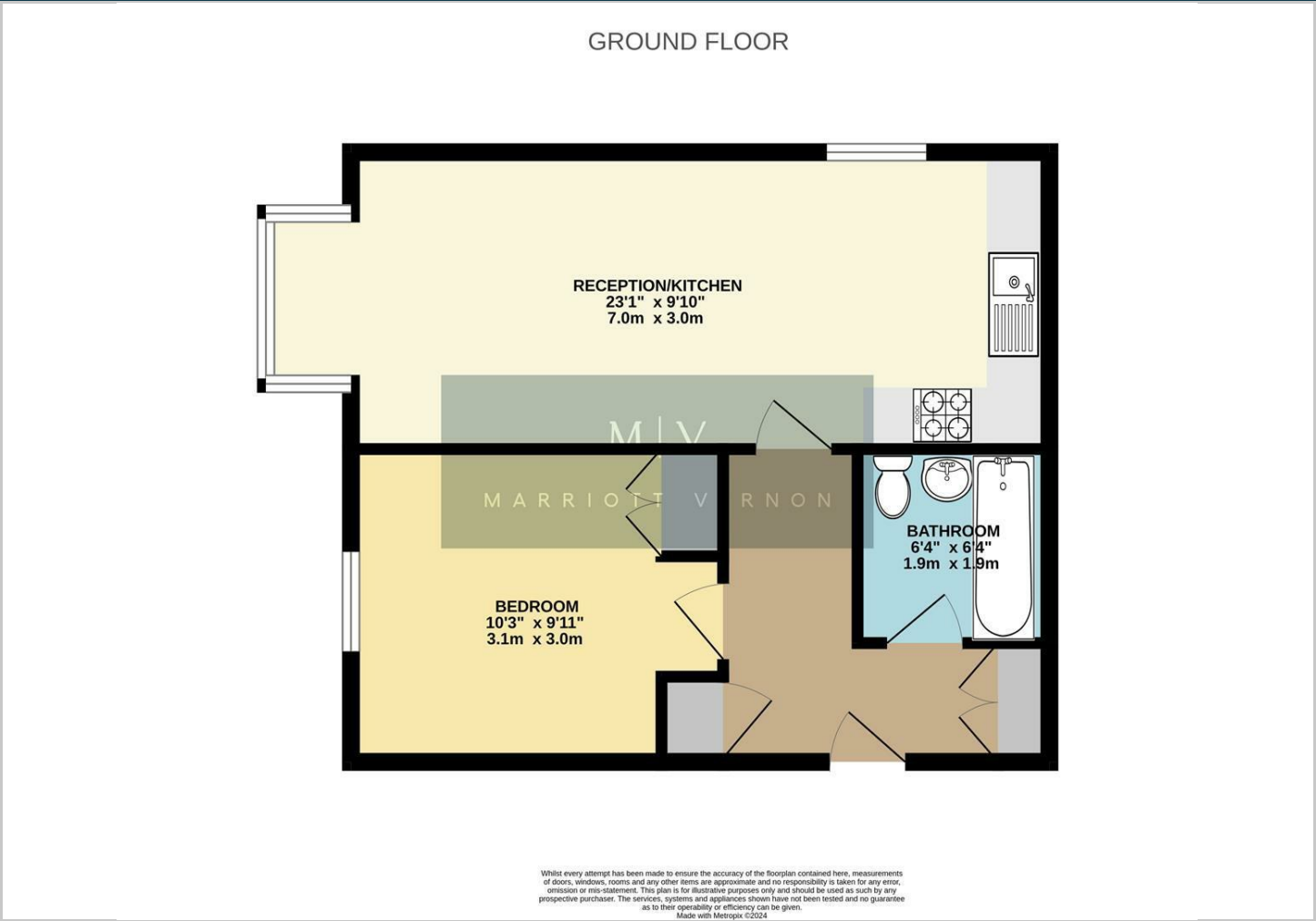




M|V

MARRIOTT VERNON

Floor Plans



Viewing

Please contact our Marriott Vernon Estate Agents Office on 0208 657 7778 if you wish to arrange a viewing appointment for this property or require further information.

The particulars are set out as a general outline only for the guidance of intended purchasers or lessees, and do not constitute, any part of a contract. Nothing in these particulars shall be deemed to be a statement that the property is in good structural condition or otherwise nor that any of the services, appliances, equipment or facilities are in good working order. Purchasers should satisfy themselves of this prior to purchasing.

Bank House, 111 South End, Croydon, CR0 1BJ
Tel: 0208 657 7778 Email: enquiries@marriottvernon.com www.marriottvernon.com

Location Map

