



6 Trough Laithe, Barrowford, Nelson, BB9 6QF

£1,250 Per Month

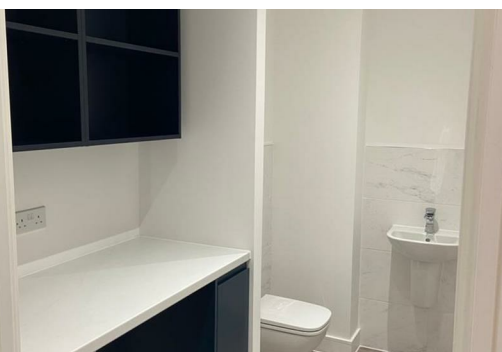
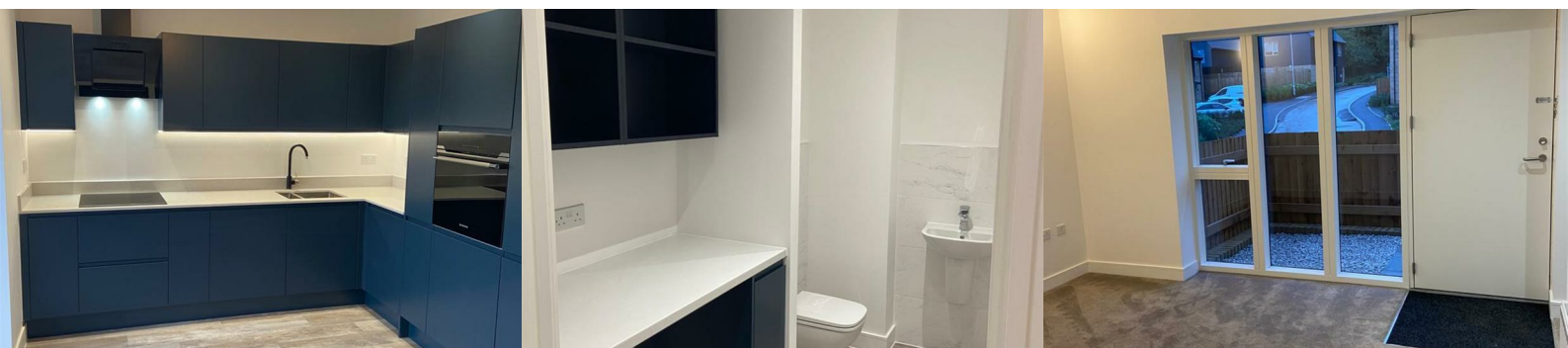


BYND Property are delighted to offer this NEW 3 bedroom Semi Detached House to the market.

In brief this stunning property has an open plan ground floor with a large kitchen/dinner area and living room, the property boasts floor to ceiling Velfac windows in the kitchen, living and master bedroom allowing the natural light to flood in. Another feature on the ground floor is a very Stylish "lootility" toilet/utility room creating maximum space in your new home.

On the first floor there is 2 generous sized bedrooms and a master bedroom with fitted wardrobes. The property is served by a Contemporary bathroom comprising of a full sized bath with separate rainfall shower and W.C.

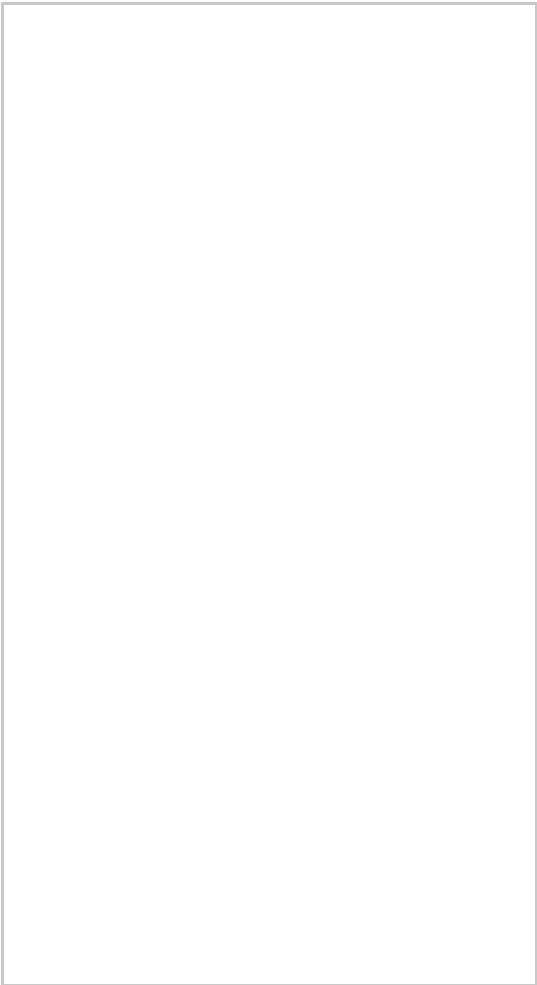
Ideal for families this new home has a large back garden with a patio area with steps leading down to a lawned garden space. The property also comes with a private driveway with enough space for 2 cars.



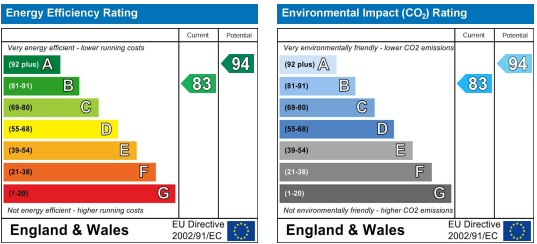
Area Map



Floor Plans



Energy Efficiency Graph



These particulars, whilst believed to be accurate are set out as a general outline only for guidance and do not constitute any part of an offer or contract. Intending purchasers should not rely on them as statements of representation of fact, but must satisfy themselves by inspection or otherwise as to their accuracy. No person in this firm's employment has the authority to make or give any representation or warranty in respect of the property.