



## 12 Parliament Street, Thatto Heath, WA9 5RE

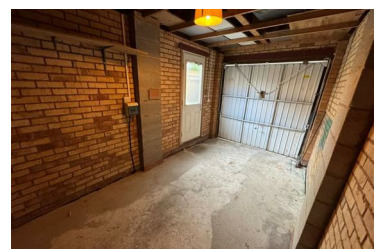
£1,000



@ThePlace is pleased to offer this lovely three-bedroom semi-detached property, situated on a pleasant cul-de-sac in the popular area of Thatto Heath, just 2 miles from St. Helens town centre.

The ground floor features a welcoming entrance hallway, cloakroom with toilet and hand basin, a modern fitted kitchen/diner with integrated appliances, and a separate living room leading into a bright and spacious conservatory with patio doors to the garden and access to the detached brick-built garage.

Upstairs, the property offers three well-proportioned bedrooms, two of which are generous doubles, along with a modern white three-piece bathroom suite.



Suite 2, The Old Courthouse Chapel Street, Dukinfield, SK16 4DT

Tel: 0333 358 0668 Email: [lettings@at-the-place.com](mailto:lettings@at-the-place.com) <https://www.at-the-place.com>