



52 Nowell Court, Middleton, M24 6EY

Asking price £85,000

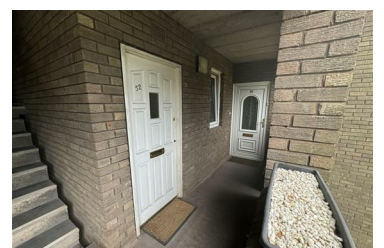
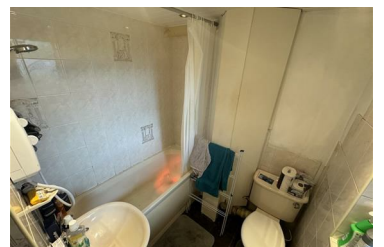


@ThePlace offers a 1, Bedroom apartment, situated on the first floor of a well maintained residential block in the popular area of Middleton. Only 6.5 miles to Manchester City Centre. Only a short walk into Middleton Centre, offering an abundance of shops and local amenities.

**** NO VENDOR CHAIN. THIS PROPERTY IS CURRENTLY TENANTED ****

Long term tenant in situ since 2020, great opportunity for potential investors. (Current rent £525pcm) Tenant in fixed term contract until June 2025.

In brief the accommodation comprises : Entrance hall, spacious lounge, well maintained kitchen, double bedroom and



Suite 2, The Old Courthouse Chapel Street, Dukinfield, SK16 4DT

Tel: 0333 358 0668 Email: lettings@at-the-place.com <https://www.at-the-place.com>