



103 Bedworth Road, Bulkington

Offers Over £550,000

 3  1  2



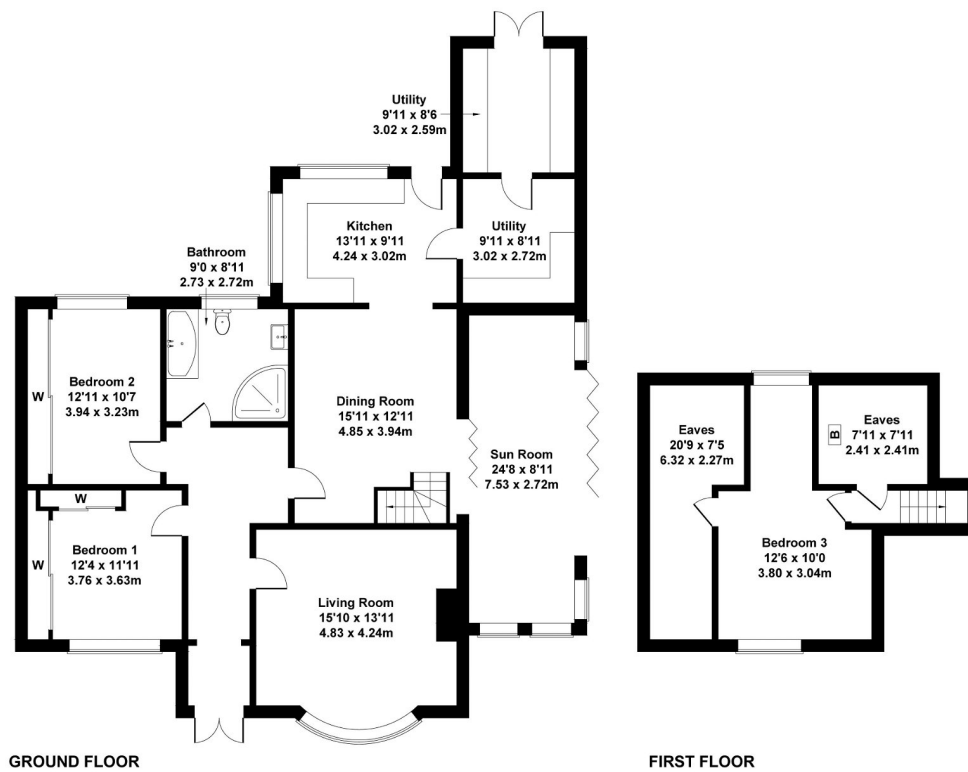
STUNNING DETACHED BUNGALOW | 3/4 Bedrooms | Incredible Orangery Style Extension | Immaculate Throughout | Sought-After Location | Generously Sized South Facing Garden | Gated Driveway | Viewing Advised

Key Features

- STUNNING DETACHED BUNGALOW
- Large Gated Driveway
- Dormer Loft Conversion
- Large Plot
- EPC - TBC
- Generously Sized South Facing Garden
- Unique Orangery-Style Extension
- Immaculate Condition
- Sought After Location
- Nuneaton & Bedworth Borough Council | Council Tax Band D

103 Bedworth Road, Bulkington, Bedworth, CV12 9LJ

Approximate Gross Internal Area
1808 sq ft - 168 sq m



Not to Scale. Produced by The Plan Portal 2024
For Illustrative Purposes Only.