



Lutterworth Road, Nuneaton, CV11 6PG

£650,000

4 2

VIDEO TOUR AVAILABLE | Large Garden | Potential Building Plot To The Rear (STPP) | Nearly 2,000 Sqft Of Living Accommodation | Beautifully Presented | Parking | Garage | Sought After Location | Should Not Be Missed!!

Floor Area
1971 sq. ft.

Tenure
Freehold

Service Charge
£ per annum

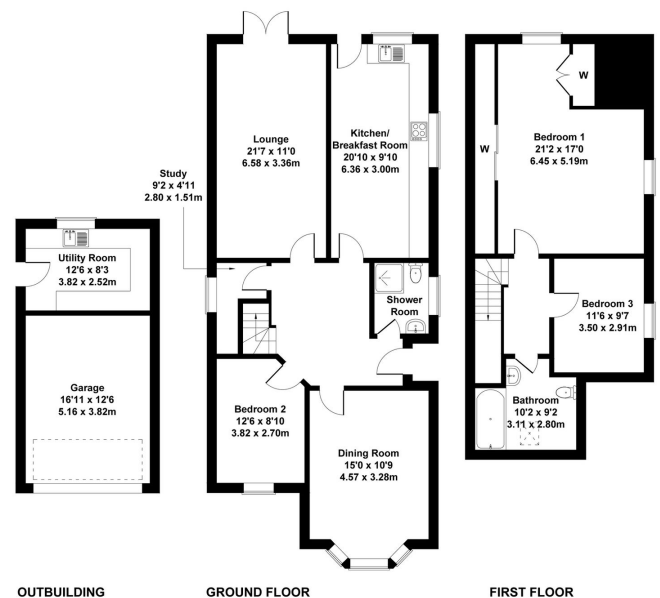
Ground Rent
£ per annum

- Garden With Koi Pond
- Multi-Generational Living Accommodation
- Outside Utility Room And Single Garage
- Wooden Log Cabin With Large Bar
- EPC - C
- Large Front & Side Driveway Suitable For Multiple Cars
- Large Kitchen Suitable For Entertaining Guests
- Nuneaton and Bedworth Borough Council
- Potential For Annexe STPP
- Council Tax Band D



Score	Energy rating	Current	Potential
92+	A		
81-91	B		
69-80	C	73 C	83 B
55-68	D		
39-54	E		
21-38	F		
1-20	G		

206 Lutterworth Road, Nuneaton, CV11 6PG
Approximate Gross Internal Area
1981 sq ft - 184 sq m



Not to Scale. Produced by The Plan Portal 2023
For Illustrative Purposes Only.