



Gardeners Place, Shrewsbury, Shropshire, SY2 6FH

Offers In Region Of £320,000

 3  2

Modern 3 bedroom semi-detached home over 3 floors | Deceptively spacious | Ground floor: Spacious modern kitchen diner with double oven and ample storage | Integrated dishwasher | Spacious living room with double doors to garden | Downstairs WC | First floor: 2 bedrooms, 1 a large double and 1 single | Large, modern, family bathroom | Top floor: Large master bedroom with en-suite and high ceilings | Good sized garden with large patio and shed |

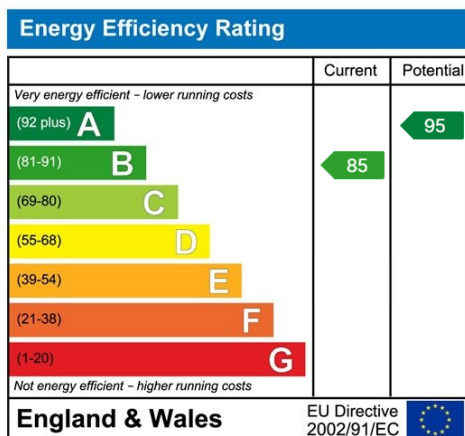
Floor Area
1130 sq. ft.

Tenure
Freehold

Service Charge
£ per annum

Ground Rent
£ per annum

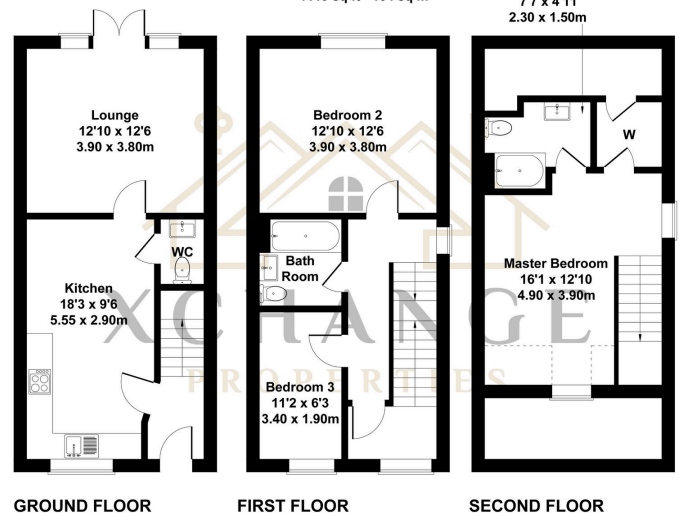
- Large Kitchen diner
- Large living room
- 3 floors of family living
- Family bathroom
- EPC Rating - B
- 4 years of NHBC Warranty remaining
- Good sized rear garden - easy to maintain
- Huge master bedroom with en-suite
- Off Road Parking
- Council Tax Band - C | Shropshire Council



5 Gardeners Place, Shrewsbury, SY26FH

Approximate Gross Internal Area
1119 sq ft - 104 sq m

Bathroom
7'7" x 4'11"
2.30 x 1.50m



Not to Scale. Produced by The Plan Portal 2025
For Illustrative Purposes Only.