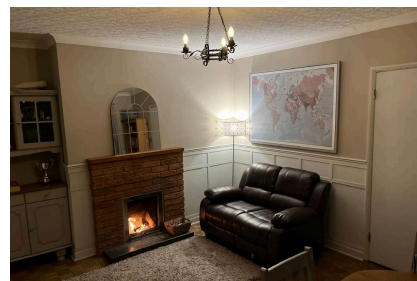


## West Winds, Preston Montford

£420,000

 3  2  2



Superb 3 bedroom detached house | Ground floor: Stylish dining room with open fire | Large living room, tastefully decorated with log burner | Conservatory offering views to open fields | Spacious kitchen with oven and ample storage | Utility room and ground floor WC | Converted modern office | First floor: Stylish master bedroom, 1 double bedroom, 1 single bedroom | Family bathroom | Large garden with countryside views | Superb semi-rural locations near schools, parks & Shrewsbury town centre.

## Key Features

- Large 3 Bedroom detached property
- Large Living room with log burner
- Conservatory
- Large patio and BBQ area
- Office
- Superb countryside views
- Large dining room with open fire
- Well established, large, redesigned garden
- Up to date 3 modern bedrooms
- Ample parking

