



## Heath End Road, Nuneaton, CV10 7JQ

£425,000

3 2

Stunning Extended 3-Bed Home – Underfloor Heating, Huge Driveway & Beautiful Garden!  
Dream Home Alert! This modernized & extended 3-bed detached home on Heath End Road, Nuneaton is the perfect blend of style, space & convenience!

### ✦ Highlights:

- ✓ Sleek open-plan kitchen-diner with UNDERFLOOR HEATING
- ✓ Cozy sitting room – perfect for relaxing!
- ✓ Driveway for 3 cars + single garage
- ✓ Stunning garden – ideal for kids, pets & growing your own produce
- ✓ Minutes from George Eliot Hospital
- ✓ Quick access to A444 & M6 – Commute to Coventry, Birmingham & Leicester with ease!

Don't miss out on this incredible home in a prime location!  
Book your viewing today!

**Floor Area**  
sq. ft.

**Tenure**  
Not given

**Service Charge**  
£ per annum

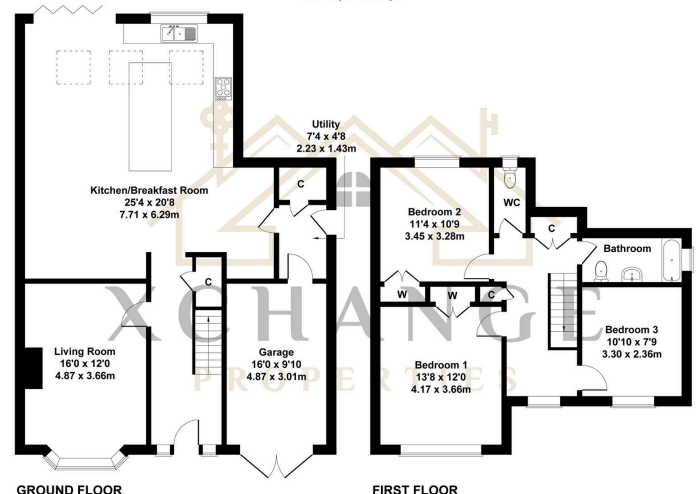
**Ground Rent**  
£ per annum

- Modernized & Extended – Stylish upgrades throughout, perfect for contemporary living.
- Underfloor Heating – Enjoy cozy warmth in the kitchen, even on the coldest days!
- Driveway for 3 Cars + Single Garage – No more parking headaches!
- Prime Location – Just minutes from George Eliot Hospital
- Great Schools Nearby – Well-regarded primary & secondary schools within walking distance.
- Open-Plan Kitchen-Diner – The heart of the home, designed for entertaining & family life.
- Cozy Sitting Room – A welcoming space to relax and unwind.
- Beautifully Maintained Garden – Ideal for gardening lovers, children, and pets.
- Excellent Transport Links – Easy access to A444 & M6, connecting to Coventry, Birmingham & Leicester.
- Close to Nuneaton Town Centre – Shops, restaurants & entertainment just a short drive away!



#### 25 Heath End Road, Nuneaton, CV10 7JQ

Approximate Gross Internal Area  
1765 sq ft - 164 sq m



Not to Scale. Produced by The Plan Portal 2025  
For Illustrative Purposes Only.