

## 1 Horninglow Road North

Guide Price £425,000

🛏 3 🚿 3 🚗 1



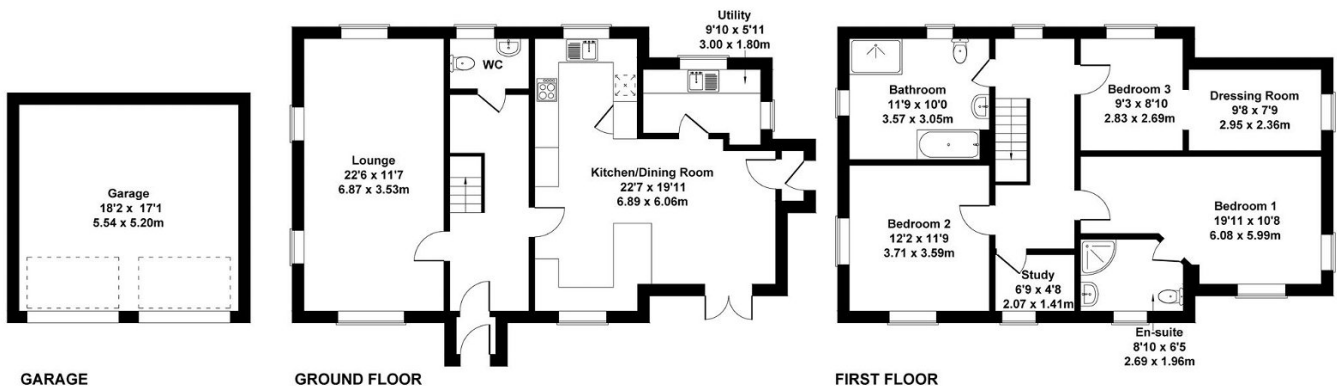
Nearly 2,000sqft | 75 Foot Canal Boat Moorings To The Rear | Canal Views | Large Gated Entrance With 8 Car Driveway | 4KW Solar Panel System With 9W Battery Storage | Warm Air Heat Pump | Newly Installed Log Burner | 3 Large Bedrooms With Master En-Suite | Private Office | Fantastic Commuter Routes And Local Amenities | Should Not Be Missed!

## Key Features

- Canal Views With 75ft Mooring
- Private Gated Driveway & Double Garage
- Built in 2016 To A High Specification
- Recently Fitted Air Source Heat Pump
- 10 Solar Panels Generating 4KW with a 9KW Battery
- Accredited Log Burner
- Large Master With En-Suite
- 3 Double Bedrooms & Office
- EPC - D
- Council Tax Band D | East Staffordshire Council

### 1 Horninglow Road North, Burton On Trent, DE13 0SL

Approximate Gross Internal Area  
1981 sq ft - 184 sq m



Not to Scale. Produced by The Plan Portal 2024  
For Illustrative Purposes Only.