



**Large Annexe & Countryside Views! Nuneaton Road, Bulkington**

Guide Price £750,000

 4  4

Being Sold With NO ONWARD CHAIN!! | Large Annexe | Incredible Countryside Views Backing On To Equestrian Facilities & Livery | Large Private Balcony | 4 Double Bedrooms | Studio With En-Suite | Bespoke Open Plan Kitchen And Living Area | Home Office | Generous Garden Space | Desirable Location | Viewings Highly Recommended

**Floor Area**  
2669 sq. ft.

**Tenure**  
Freehold

**Service Charge**  
£ per annum

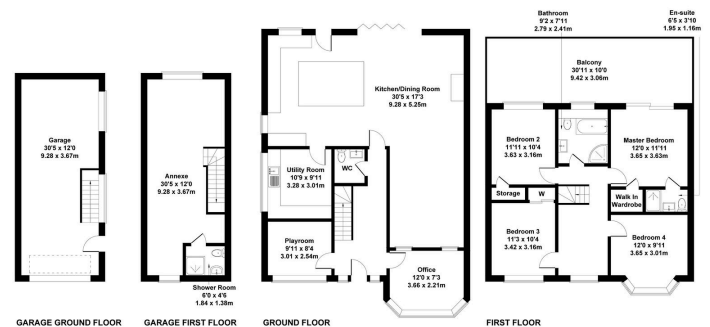
**Ground Rent**  
£ per annum

- NO ONWARD CHAIN!
- 4 Large Bedrooms | Master With En-Suite & Walk-In-Wardrobe
- Bespoke Oak Porch With Silicone Rendering & Front Oak Cladding
- Stunning Open Plan Kitchen
- Double Garage & Multiple Car Driveway
- Countryside Views Overlooking Equestrian Facilities And Livery
- Separate Annexe Above The Double Garage
- Private Balcony To Rear
- Generous Garden Space
- EPC B | Council Tax Band G | Nuneaton and Bedworth Council



Score	Energy rating	Current	Potential
92+	A		
81-91	B		
69-80	C	71 C	79 C
55-68	D		
39-54	E		
21-38	F		
1-20	G		

460 Nuneaton Road, Bulkington, Bedworth, CV12 9SB  
Approximate Gross Internal Area  
2869 sq ft - 248 sq m



Not to Scale. Produced by The Plan Portal 2024  
For Illustrative Purposes Only.