



27 Magyar Crescent

£500,000

🛏️ 5 🚿 2 🚗 2



Sellers Story

'This has been a fabulous family home, my favorite room is the lounge especially at the end of a busy day, as the cul-de-sac is so quiet and peaceful the lounge is my quiet relaxing space once the children are bathed and in bed. A typical day is usually a short walk which takes just a few minutes to take the children to Whitestone Infant school, and then a dog walk through the wooded Dell in Paul's Land which is just a stones throw from my front door.

The children love to spend time in the garden playing which is all enclosed, so it's a safe for them to play. I have a handy outdoor kitchen set up for the warmer days, and an open plan spacious kitchen/diner, ideal for friends & family get-togethers. I've hosted many kitchen parties as there is plenty of room for dancing...'

Description

A superb family detached residence, well presented with modern features, spacious hallway, separate lounge, and doorway leading to a large spacious breakfast kitchen, with wrap around lounge featuring bi-fold doors to the garden. Additionally, there is a large separate utility, down stairs WC, and side door leading to the patio, and integrated access door to the garage.

The staircase leads onto to a spacious landing to 3 x large bedrooms, family bathroom and 2 x single bedrooms.

Entrance Hall

2.18m x 3.68m

Access via front door with stairs to first floor and doors to living room and kitchen/diner.

Living Room

3.51m x 4.65m

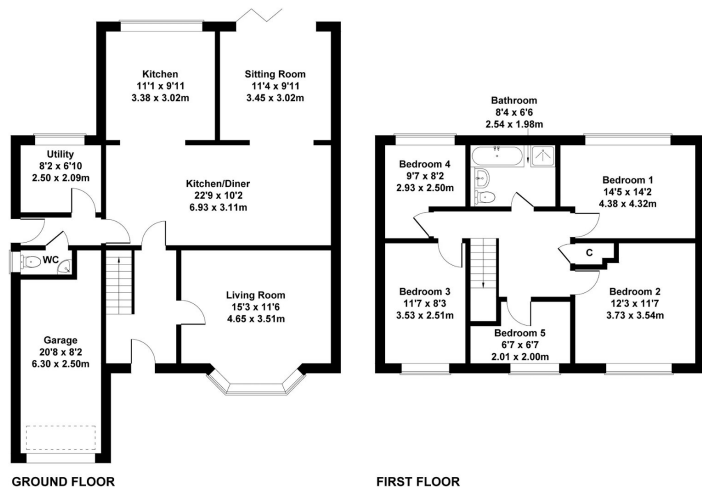
With double glazed window to front, feature fireplace with wall lights.

Kitchen/Diner



27 Magyar Crescent, Nuneaton, CV11 4SG

Approximate Gross Internal Area
1755 sq ft - 163 sq m



Not to Scale. Produced by The Plan Portal 2024
For Illustrative Purposes Only.

- NO CHAIN
- Breakfask Kitchen
- Large Plot
- Whitestone Infant School catchment area
- Delightful Cul-de-sac
- 5 bedroom Detached House
- Separate Utility
- Off-road Parking & Garage
- Adjacent to the wooded Dell on the edge of Pauls Land
- Desired Postcode with easy access links to M1, M69, M6

