




33 Shilton Lane, Bulkington

Guide Price £525,000

 3  2  1



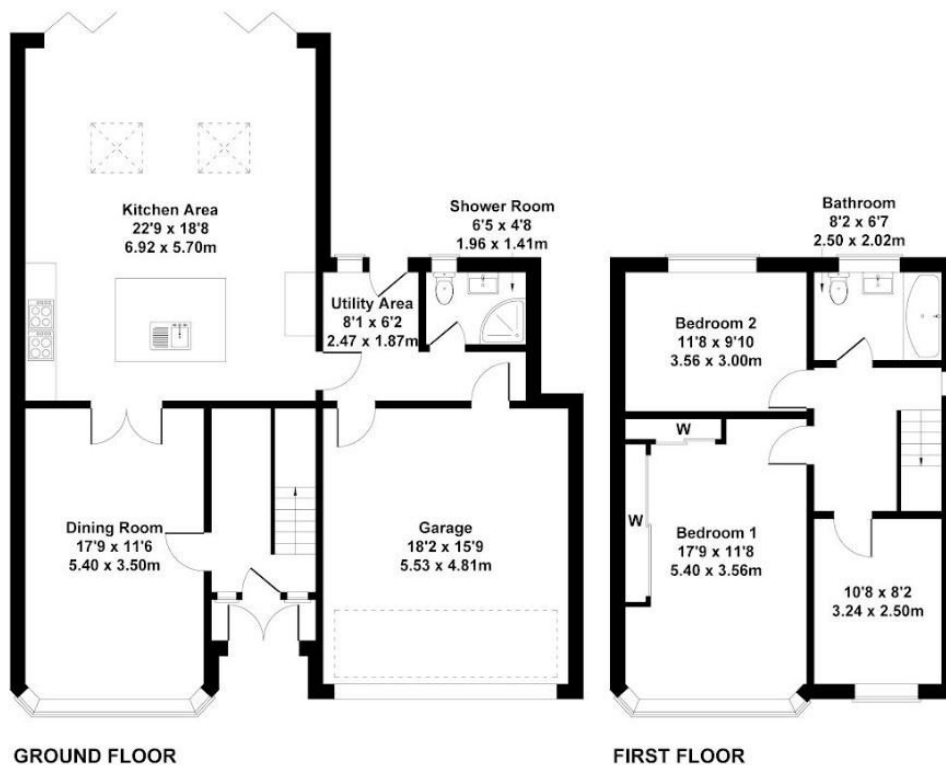
VIDEO TOUR AVAILABLE | WHAT A KITCHEN! Impressive Rear Extension With Bi-Fold Doors | Popular Shilton Lane Location | Large Driveway For 6 Cars | Private Rear Garden With Sweeping Countryside Views | The Perfect "Man Cave" With Hot Tub And Bar Area | A Perfect Family Home Who Love To Entertain Guests!

Key Features

- Large Private Garden Overlooking GreenBelt Land
- 3 Bedrooms With Opportunity For Loft Conversion (STP)
- Further Opportunity To Extend To Side And Rear (STP)
- Excellent Commuter Routes To M6 & M69
- EPC - TBC
- Extended Kitchen With Bifold Doors & Velux Windows
- Gated Front Entrance With Large Driveway
- SUMMERHOUSE WITH HOT TUB AND BAR!
- Council Tax Band E - Nuneaton & Bedworth Council
- Viewing By Appointment Only

33 Shilton Lane, Bulkington, CV12 9JL

Approximate Gross Internal Area
1711 sq ft - 159 sq m



Not to Scale. Produced by The Plan Portal 2023
For Illustrative Purposes Only.