


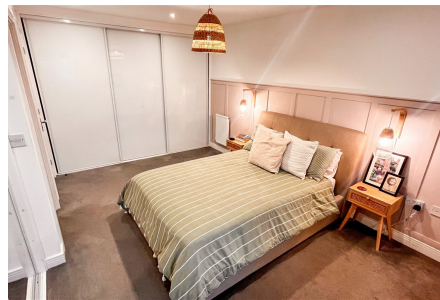


25 Olympic Way

Offers Over £300,000

 4  2  0



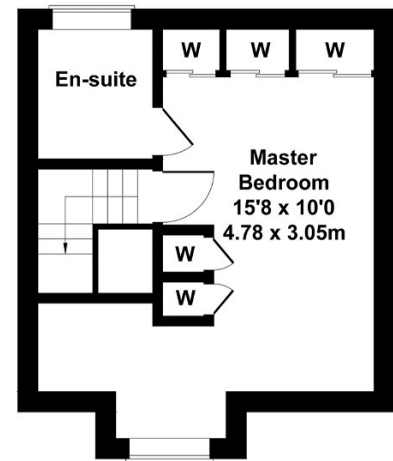
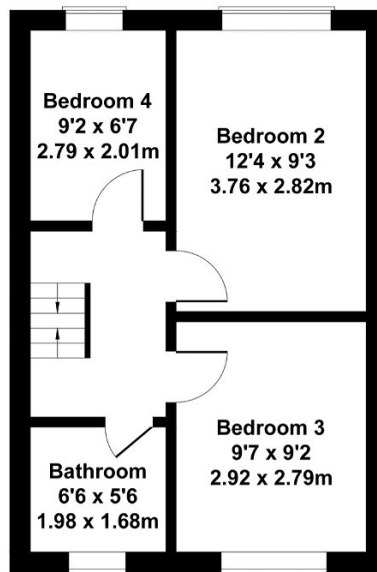
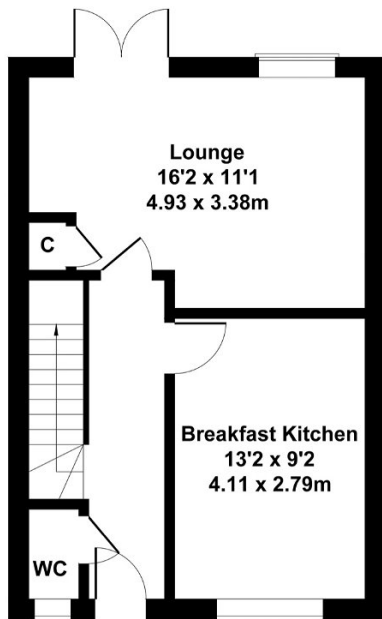
OPEN HOUSE 14TH OCTOBER 10:00-13:00 BY APPOINTMENT ONLY | VIDEO TOUR AVAILABLE | MOVE IN READY PROPERTY! | Over 3 Floors | 4 Large Bedrooms | Over 1100sqft Of Living Accommodation | Master With Built In Wardrobes & En-Suite Bathroom | Spacious And Contemporary Throughout! Viewing Is Highly Recommended!

Key Features

- Highly Desirable Location
- Master Bedroom With Large Wardrobes & En-Suite
- Only Built In 2014
- Single Garage
- EPC -B | Council Tax Band - C
- Set Over 3 Storeys
- Contemporary Design Throughout
- Large Garden
- Local Planning Authority - Hinckley and Bosworth
- Viewing By Appointment Only

25 Olympic Way, Hinckley, LE10 1ET

Approximate Gross Internal Area
1109 sq ft - 103 sq m



Not to Scale. Produced by The Plan Portal 2023
For Illustrative Purposes Only.