




Luxury Home! Lutterworth Road, Nuneaton, CV11 6PY

Offers Over £750,000

 4  3  2

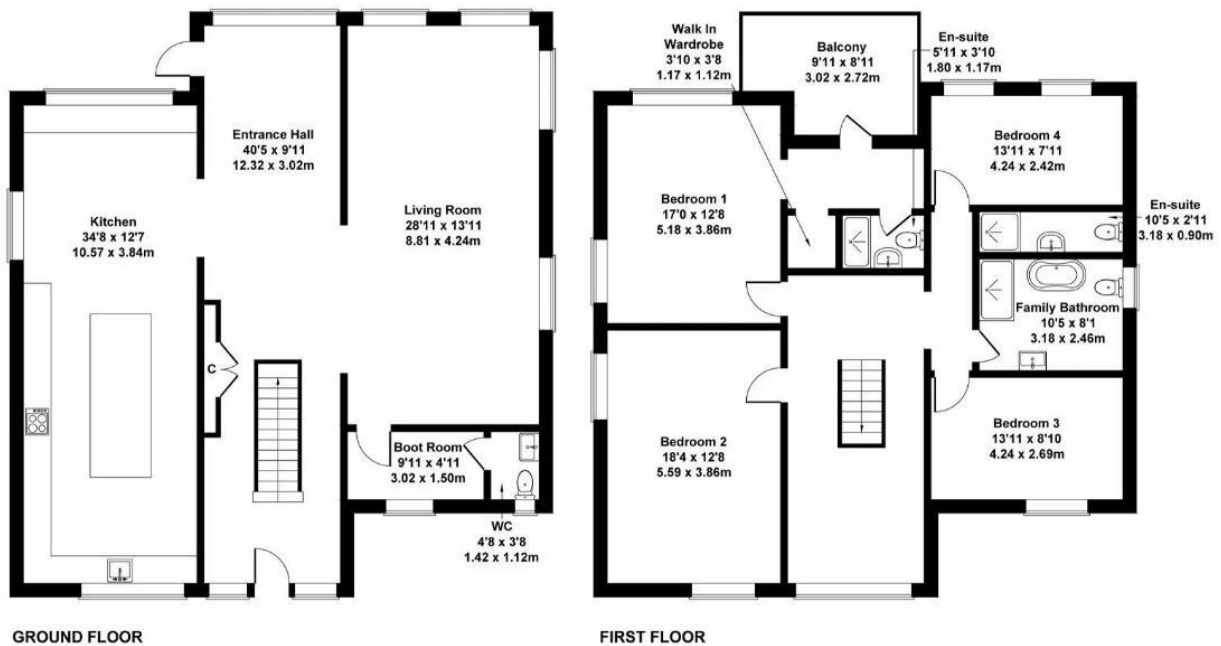


Are You Looking For A Newly Renovated Family Home Situated On The Desirable Lutterworth Road? Here Is Your Chance! | NO ONWARD CHAIN | Fully Renovated Throughout | Freehold | Detached | Large Garden | Driveway | Granite Kitchen Worktops | Entertainers Home | Desirable Location | Not To Be Missed!

Key Features

- No Onward Chain
- Bespoke Granite Wortops
- Luxury Fittings Throughout
- Large Garden
- EPC - B | Council Tax Band E
- Over 2500 sqft Living Accommodation
- 4 Bedrooms With 2 En-Suites
- Master Bedroom With Balcony
- Multiple Car Driveway
- Nuneaton & Bedworth Council

159 Lutterworth Road
Approximate Gross Internal Area
2533 sq ft - 235 sq m



Not to Scale. Produced by The Plan Portal 2023
For Illustrative Purposes Only.