

## 6,000 SqFt Luxury Home, Magyar Crescent, Nuneaton

Offers Over £1,300,000

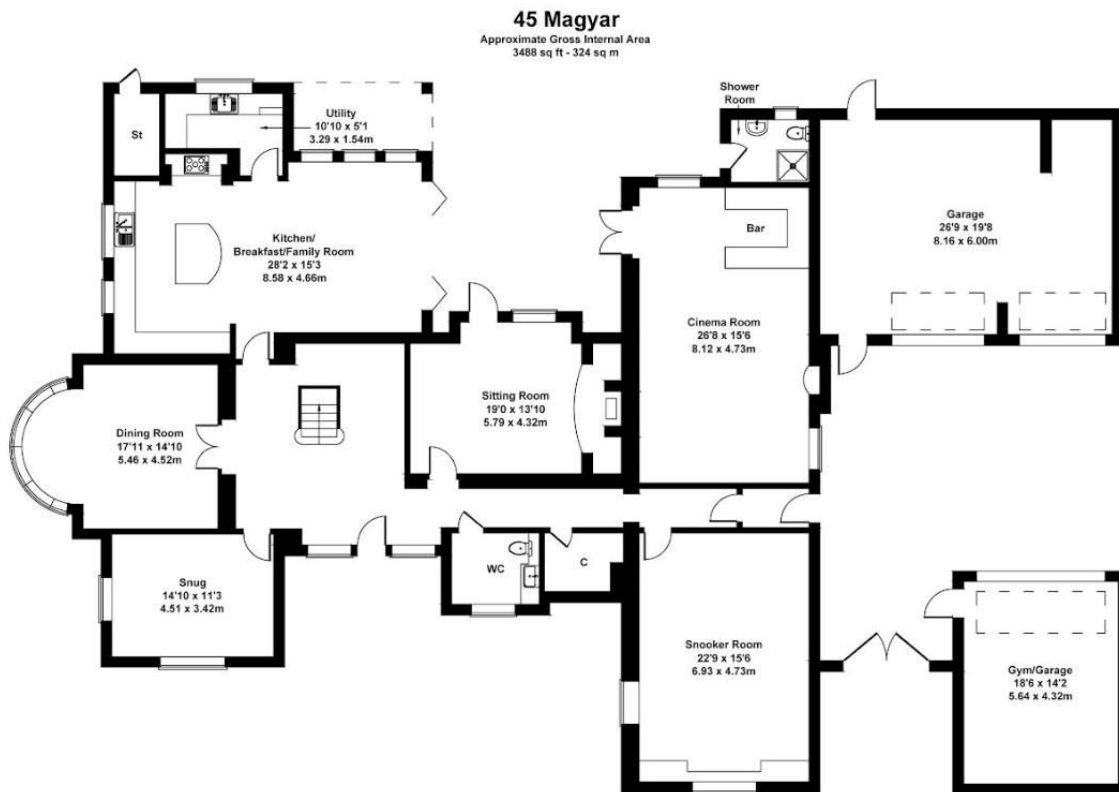
 5  4  5



**OVER 6,000 SQUARE FOOT LUXURY HOME! | Electric Gated Front | Quiet CulDeSac location! | Outstanding Ofsted Rated Local Schools | 5 Large Bedrooms | 5 Reception Rooms & Snooker Room/Gym Room | Built In 2009**

## Key Features

- 5 Large Bedrooms, 3 en-suites, 1 family bathroom, downstairs shower room
- Set back on a Quiet Cul-De-Sac
- Theatre Room With Entertainment Bar
- Entertainment Room - Ideal For A Large Office
- Over 6,000 Square Feet of property!
- Electric Gated Front With Sweeping Driveway with Security System
- 2.5 miles from Nuneaton Station - Direct Route To London And Birmingham
- EPC Rating C/Council Tax Band G / Nuneaton and Bedworth Borough Council



GROUND FLOOR

Not to Scale. Produced by The Plan Portal 2023  
For Illustrative Purposes Only.