

## The Paddocks, Bulkington, Bedworth, CV12 9SR

Guide Price £465,000

🛏️ 4 🚗 3 🚲 2



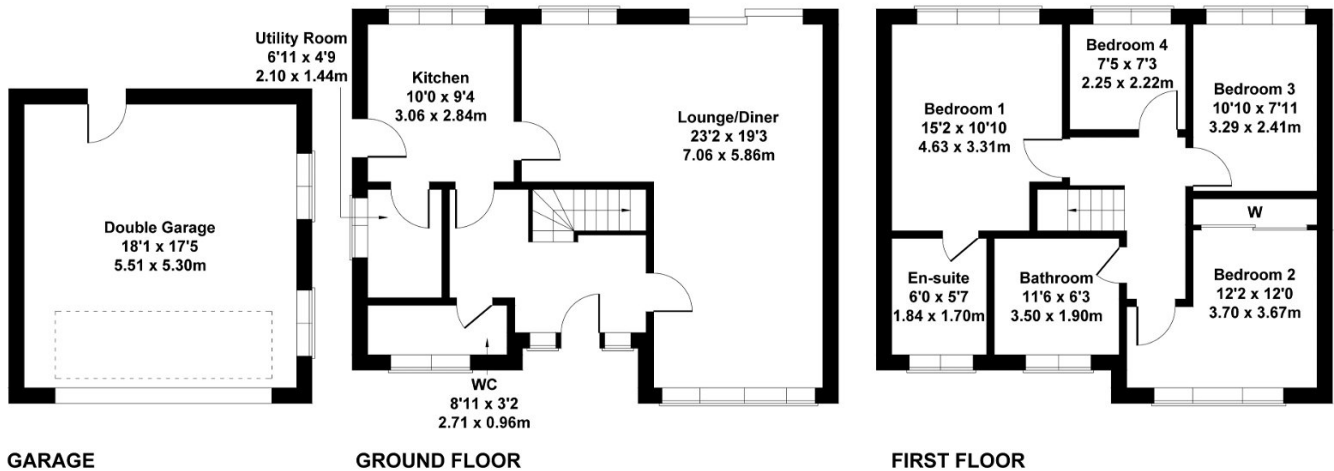
Prime Bulkington Location In A Private Cul-De-Sac | Fantastic Commuter Routes To Main Motorways | A Perfect Family Home | Double Garage And Private Rear Garden

## Key Features

- Prime Bulkington Location In A Private Cul-De-Sac
- Double Garage And Private Rear Garden
- Beautiful Downstairs Slate Flooring
- 4 Large Bedrooms With En-Suite To Master
- Fantastic Commuter Routes To Main Motorways
- Stunning Light Fixtures In Dining Room
- Perfect Family Home
- EPC D | Nuneaton and Bedworth Borough Council

## 6 The Paddocks, Bulkington

Approximate Gross Internal Area  
1528 sq ft - 142 sq m



Not to Scale. Produced by The Plan Portal 2023  
For Illustrative Purposes Only.