




Lutterworth Road, Nuneaton, CV11 6PE

Guide Price £700,000

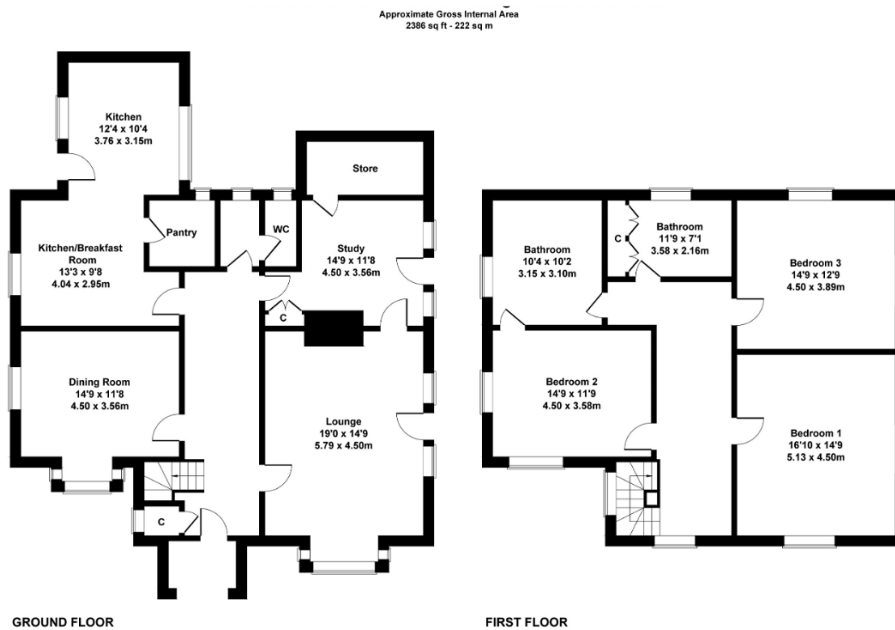
 3  2  0



A Truly Majestic & Unique Home | Built in 1930 By Famous Architect Alfred Parker | Situated In A Desirable Location | Huge Plot With Enormous Potential | Possibility To Build Additional Buildings In The Garden (STP)

Key Features

- SOLD WITH NO UPWARD CHAIN!
- Desirable Lutterworth Road Location
- Over Half An Acre Plot With Mature Gardens To The Front & Rear
- Potential To Extend Or Build (STP)
- Sweeping Driveway Designed To Home Multiple Cars Or Motorhomes
- Large Kitchen With Triple Aspect Windows
- Three Large And Well Kept Bedrooms
- Three Large Reception Rooms Perfect For Entertaining
- Freehold
- Nuneaton Borough Council | EPC - F | Council Tax Band G



Not to Scale. Produced by The Plan Portal 2023
For Illustrative Purposes Only.