

Rugby Road, Bulkington, Bedworth, CV12 9JQ

£475,000

🛏 4 🚿 2 🚺 2

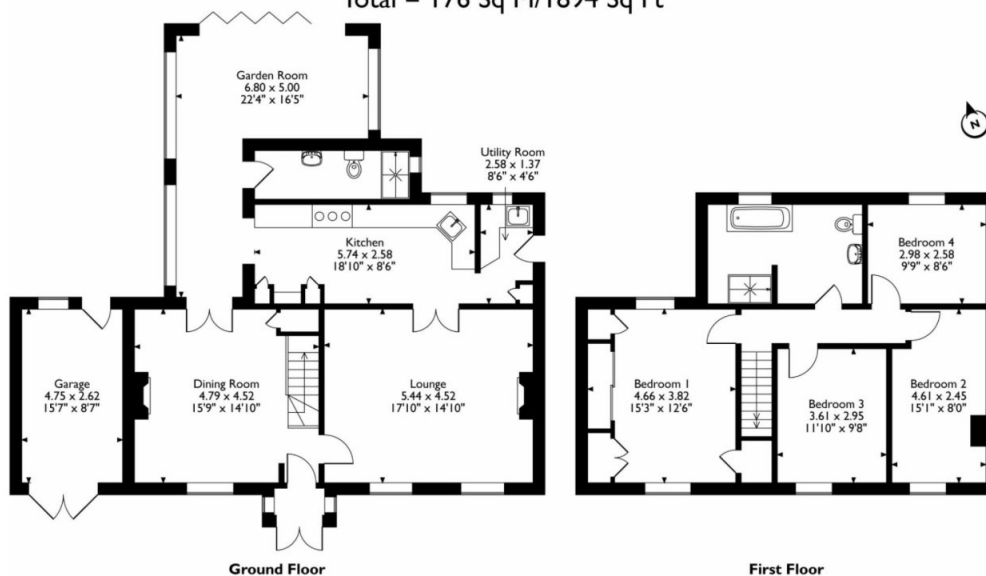


Beautifully Decorated Throughout | Character Property | Detached | Downstairs Shower Room | Driveway for Multiple Cars | Fitted Kitchen | Four Large Bedrooms | Large Conservatory With Bifold Doors | Large Patio Area For Alfresco Dining | Large Garden Mainly Laid To Lawn | The Perfect Family Home

## Key Features

- Superb 4 Bedroom Detached Cottage
- Extended And Renovated To The Very Highest Standard
- Ease of access to main motorway links to the M6, M1, M69 and M42.
- Driveway for Multiple Cars
- Stunning Kitchen With Granite Worktops & Integrated Appliances
- Inglenook Fireplace With Logburner
- Bifold Doors To Rear Garden
- A Perfect Property To Entertain Guests And Alfresco Dining
- Council Tax Band: D
- Nuneaton & Bedworth Borough Council

Rugby Road, Bulkington, Bedworth, Warwickshire  
 Approximate Gross Internal Area  
 Main House = 164 Sq M/1765 Sq Ft  
 Garage = 12 Sq M/129 Sq Ft  
 Total = 176 Sq M/1894 Sq Ft



Please note that the location of doors, windows and other items are approximate and this floorplan is to be used for illustrative purposes only. Unauthorized reproduction is prohibited.