



SLATER BROOKING

Sales and Lettings

If you're selling, letting or just looking, contact Slater Brooking

Bury Road, Rawtenstall, Rossendale, BB4

Offers In Region Of £630,000

4 2 3



Bury Road, Edenfield, Rossendale - Stunning 4-Bedroom Semi-Detached Family Home with Exceptional Space and Features

This beautifully presented and deceptively spacious 4-bedroom semi-detached family home on Bury Road, Edenfield, offers over 2,600 sq ft of well-designed living space, making it perfect for modern family living. With its unusually generous room sizes, double garage, workshop, driveway parking, and low-maintenance garden, this property is an absolute must-view for those seeking a home that effortlessly combines style, functionality, and location.

Spacious 4-Bedroom Semi-Detached Home: Enjoy a generous layout with large rooms throughout, designed with family comfort in mind.

Beautiful Modern Presentation: The current owners have lovingly maintained and updated the property, showcasing modern décor and tasteful finishes in every room.

Double Garage & Workshop.



SLATER BROOKING

Sales and Lettings

If you're buying, selling or just looking, contact Slater Brooking

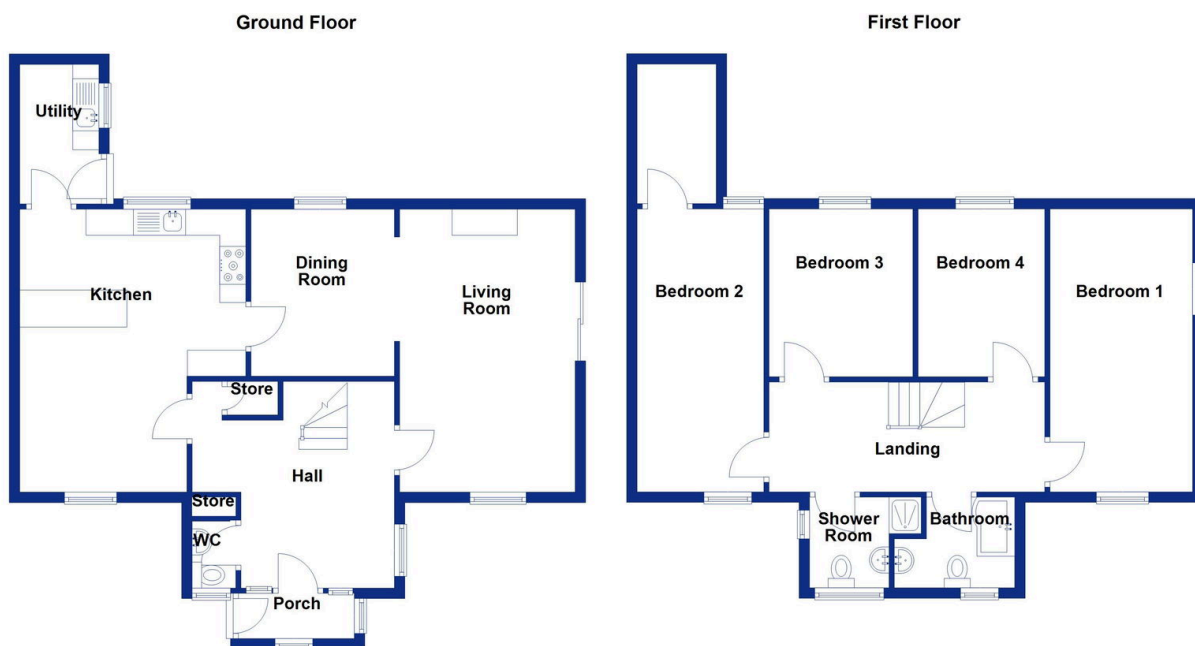


SLATER BROOKING

Sales and Lettings

If you're selling, letting or just looking, contact Slater Brooking

- Substantial 4 Bedroom Semi Detached
- Well Maintained Rear Gardens
- Ample Off Road Parking
- Countryside Walks and Views
- Close to Local Schools
- Quiet Location
- Large Garage/Workshops
- Walking Distance to Rawtenstall
- Nearby Local Pubs and Amenities
- Commuter Transport Links



SLATER BROOKING

Sales and Lettings

If you're buying, selling or just looking, contact Slater Brooking