



2



1



nu

- 2 Bedroom Link Detached Bungalow
- Garage
- No Upper Chain Involved
- Council Tax Band B

- Low Maintenance Rear Garden
- Gas Central Heating
- Modern Kitchen & Bathroom

- Driveway for upto 3 Cars
- Sealed Unit Double Glazed Windows
- EPC TBC



2 bedroom link detached bungalow situated on Allerdean Close in West Denton Park, offered for sale with no upper chain involved, benefitting from gas central heating and sealed unit double glazed windows. Briefly comprising of an Entrance Hallway leading to the Lounge with a feature fireplace, wall lights and patio doors onto the rear garden. The Kitchen has wall and base units with roll top work surfaces, stainless steel sink and drainer unit, tiled splash back, wall mounted combi boiler, plumbed for an automatic washing machine, integrated electric oven and gas hob, laminate flooring, door to the side. The Bathroom has a panelled bath with an electric shower over and a shower screen, low level w/c, pedestal hand wash basin, tiled walls and floor. There are 2 double Bedrooms.

Externally there is drive way parking for up to 3 cars to the front leading to a garage with an up and over door which has power and light. Gate access to the low maintenance private and enclosed paved rear garden.

West Denton Park is pleasantly situated on the Western periphery of Newcastle, with good access to the A69 as well as road and public transport links into the city and other surrounding areas. There are some lovely walks directly from the property, along with access to schools and other amenities.

**Hallway**

**Lounge**

**Kitchen**

**Bathroom**

**Bedroom 1**

**Bedroom 2**



*\*Please see Floor Plan on Page 4 for room sizes.*





Energy Performance: TBC

Council Tax Band: B

Distance from Lemington Riverside Primary School: 1.2 miles

Distance from Kenton Bank Foot Metro: 3.7 miles

Distance from Newcastle Central Train Station: 5.4 miles :

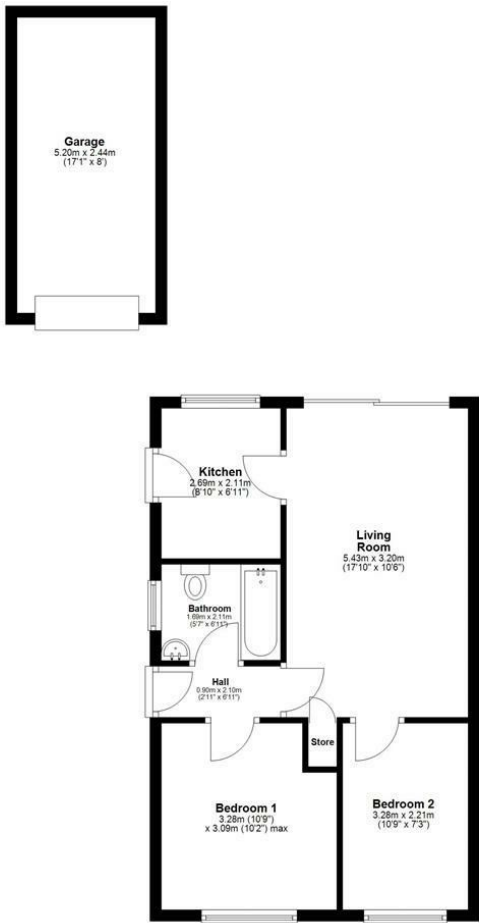
*Please note all sizes and distances are approximate.*

**2024  
WINNERS**

**ESTAS**

*Verified reviews from our clients*

Ground Floor



Total area: approx. 60.4 sq. metres (650.1 sq. feet)

Whilst every attempt has been made to ensure the accuracy of the floor plan contained here, measurements of doors, windows, rooms and any other items are approximate and no responsibility is taken for any error, omission, or mis-statement. The Plan is for illustrative purposes only. Version 1

Plan produced using PlanUp.



These particulars do not constitute or form part of an offer nor may they be regarded as representative. All interested parties must themselves verify their accuracy. It is not company policy for any gas, oil or electrical appliances to be tested and purchasers must satisfy themselves as to their working order. Measurements are approximate, floor plans are not to scale and are for illustration purposes only.