



THE

BLEMME

THREE BEDROOM HOME

PLOTS 3, 4, 7, 12, 18, 48, 66, 73, 77, 83 & 176



Brought to you by

Bellway



LATIMER
by Clarion Housing Group



THE

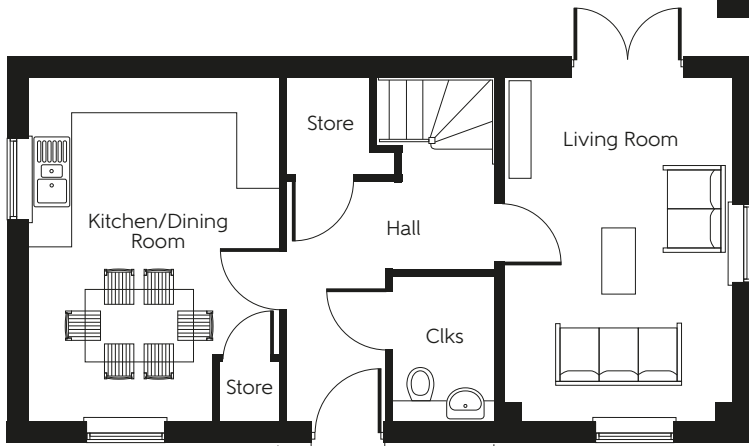
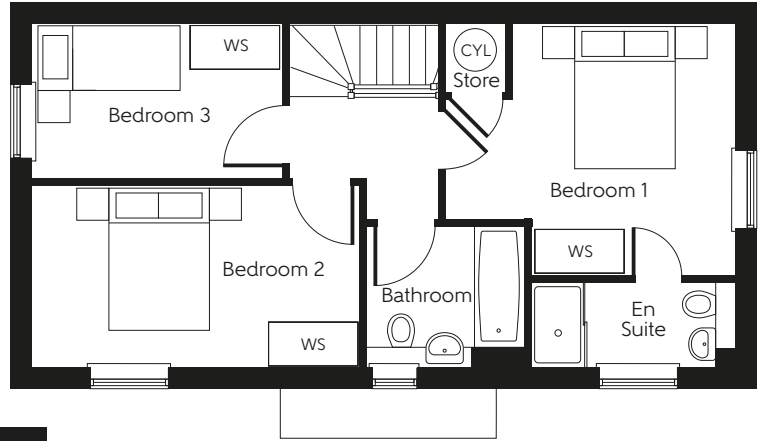
BLEMME

THREE BEDROOM HOME

PLOTS 3, 4, 7, 12, 18, 48, 66, 73, 77, 83 & 176

First floor

Bedroom 1	3.487m x 3.077m	11'5" x 10'1"
Bedroom 2	4.580m x 2.537m	15'0" x 8'4"
Bedroom 3	3.480m x 2.137m	11'5" x 7'0"



Side garden variant ground floor for plots 3, 4, 7, 12 & 18 only.

Ground floor

Kitchen/Dining Room	4.788m x 3.479m	15'9" x 11'5"
Living Room	4.788m x 3.157m	15'9" x 10'4"

Total Area 93.8 sq.m. 1010 sq.ft.

Clks - Cloakroom (CYL) - Hot water Cylinder WS - Wardrobe Space (suggestion only, wardrobe not included)

Furniture arrangements are for illustrative purposes only. Items are not included, nor to scale.

The items shown in this key may be subject to change, and positions could vary from those indicated on this floorplan. Please refer to Sales Advisor for details of your selected plot. Computer generated image shown overleaf. External finishes, landscaping and configuration may vary from plot to plot. Please refer to Sales Advisor for further details. All dimensions are approximate and should not be used for carpet sizes, appliance spaces or furniture. We operate a policy of continuous improvement and individual features such as kitchen and bathroom layouts, doors, windows, garages and elevational treatments may vary from time to time. Consequently these particulars should be treated as general guidance only and do not constitute a contract, part of a contract or a warranty.

Brought to you by

